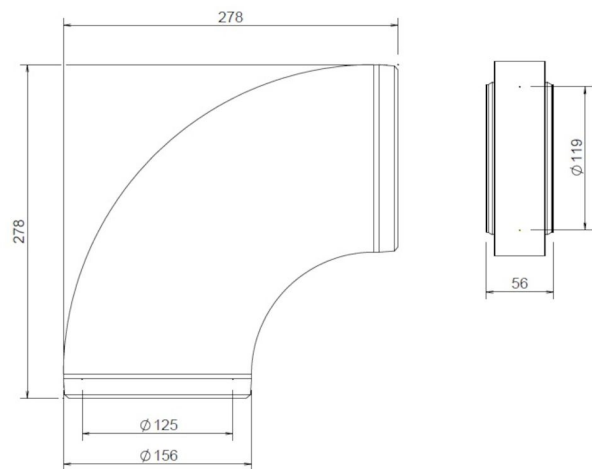
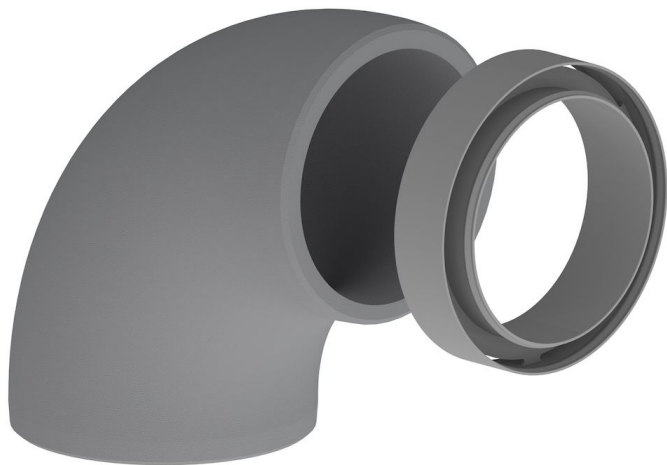


General information

Elbow insulated EPS 125 90°



Specifications

Article number	400480553
Product category	Insulated tube
Material	EPS
Colour	Gray
Wall Thickness (mm)	15,5
Weight (kg)	0,2

Dimensions

Diameter inside (mm)	125
Diameter outside (mm)	156
Dimensions (l x w x h mm)	278 x 156 x 278

Application Insights

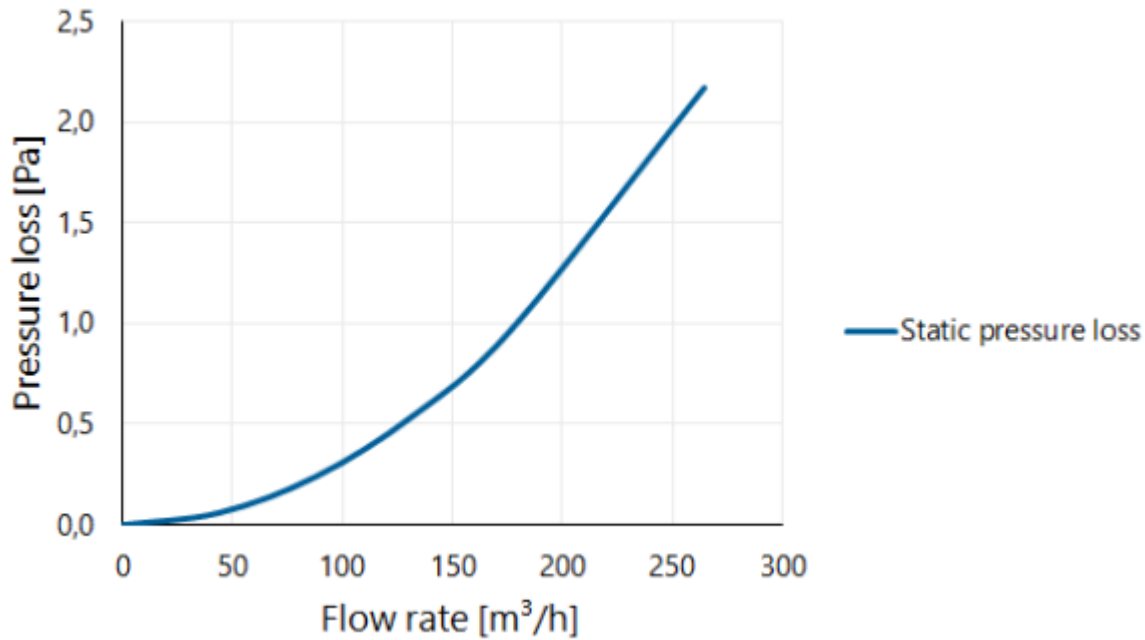
Application	Ventilation
Supply / Extract	Supply/Extract
Temperature range (°C)	-25 / +80

Technical Specifications

Maximum air flow (m ³ /h)	275
ζ extract	0,10
ζ supply	0,10
Air tightness class (ATC)	2
Thermal resistance (W/mK)	0,032
R-value (m ² K/W)	0,48
Fire rating EN 13501-1	E
Other specifications	-

Graph

Pressure loss



Table

Flow velocity pressure table

Flow rate			Static pressure loss [Pa]
[m/s]	[m³/h]	[l/s]	
0	0	0	0,0
1	44	12	0,1
2	88	25	0,2
3	133	37	0,5
4	177	49	1,0
6	265	74	2,2