







| Series | Type | Vin | Vout [kV] | Iout cc [mA] | ED | Output | Applications | page |
|--------|------|-----|-----------|--------------|----|--------|---|------|
| | | | | | | |     | |

TRS INDUCTIVE TRANSFORMER | TRASFORMATORE INDUTTIVO TRS



| | | | | | | | | | | |
|-------------|------|-------|-----------|-----------|-----------------|---|---|---|---|----|
| TRS513C | 230V | 2x2,5 | 10 | 100% | Grounded center | | | ● | ● | 28 |
| TRS812C | 230V | 2x4 | 12 | 100% | Grounded center | | ● | | ● | 28 |
| TRS815C | 230V | 2x4 | 15 | 100% | Grounded center | | | | ● | 28 |
| TRS818C | 230V | 2x4 | 18 | 100% | Grounded center | | ● | | ● | 28 |
| TRS820 | 230V | 2x4 | 20 | 25% on 4' | Grounded center | | ● | | | 28 |
| TRS1020 | 230V | 2x5 | 20 | 25% on 4' | Grounded center | | ● | | | 28 |
| TRS1020 | 230V | 2x5 | 20 | 33% on 3' | Grounded center | | ● | | ● | 28 |
| TRS1030 | 230V | 2x5 | 30 | 25% on 4' | Grounded center | | ● | | | 28 |
| TRS1220 | 230V | 2x6 | 20 | 25% on 4' | Grounded center | | ● | | | 28 |
| TRS404PC | 230V | 1x4 | 4 | 100% | Grounded pole | ● | ● | | | 29 |
| TRS505PC | 230V | 1x5 | 5 | 100% | Grounded pole | ● | ● | | | 29 |
| TRS508PC | 230V | 1x5 | 8 | 100% | Grounded pole | ● | ● | | | 29 |
| TRS510PC | 230V | 1x5 | 10 | 100% | Grounded pole | ● | ● | | | 29 |
| TRS515PC | 230V | 1x5 | 15 | 100% | Grounded pole | ● | ● | | | 29 |
| TRS6.508PC | 230V | 1x6,5 | 8 | 100% | Grounded pole | ● | ● | | | 29 |
| TRS606PC | 230V | 1x6,5 | 6 | 100% | Grounded pole | ● | ● | | | 29 |
| TRS610PC | 230V | 1x6,5 | 10 | 100% | Grounded pole | ● | ● | | | 29 |
| TRS708PC | 230V | 1x7 | 8 | 100% | Grounded pole | ● | ● | | | 29 |
| TRS818PC | 230V | 1x8 | 18 | 100% | Grounded pole | ● | ● | | | 29 |
| TRS820P | 230V | 1x8 | 20 | 25% on 4' | Grounded pole | ● | ● | | | 29 |
| TRS723P US | 120V | 1x7 | 23 | 25% on 4' | Grounded pole | ● | ● | | | 29 |
| TRS820PISO | 230V | 1x8 | 20 | 33% on 3' | Insulated | ● | ● | | | 29 |
| TRS830P | 230V | 1x8 | 30 | 25% on 4' | Grounded pole | ● | ● | | | 29 |
| TRS1815C/IS | 230V | 1x2 | 15 | 100% | Insulated | ● | ● | | | 29 |

TRS

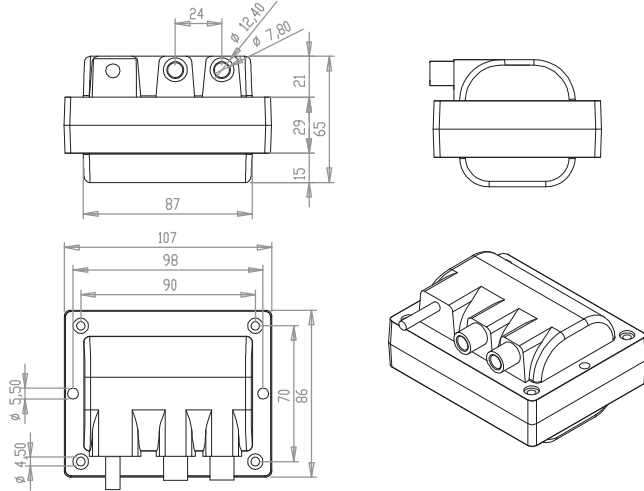


28

2 POLES | 2 POLI

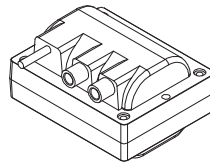


Technical drawing | Disegno tecnico [mm]

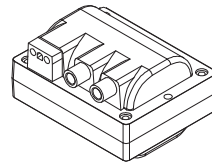


Inlet | Ingressi

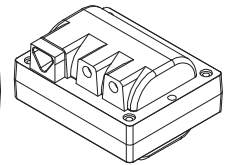
Standard buried cable
Cavo annegato standard



COFI plug
Presca per spina Cofi

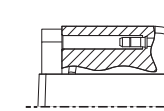


Triangle plug
Presca spina Triangolo

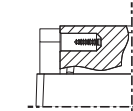


Outlet | Uscite

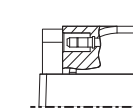
Cod: SPRO



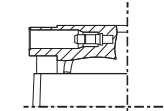
Cod: VIRAS



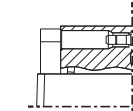
Cod: SPRAS



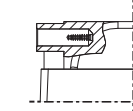
Cod: SPMAN



Cod: SP



Cod: VIMAN



| Type | Vin | Freq | Vout | Iout | ED | Output | Note |
|--|------|------|----------|-------|------|-----------------|--------|
| CONTINUOUS 100% CONTINUI 100% | | | | | | | |
| TRS513C | 230V | 50Hz | 2x2,5 kV | 10 mA | 100% | Grounded center | CE |
| TRS810C | 230V | 50Hz | 2x4 kV | 10 mA | 100% | Grounded center | DVE CE |
| TRS812C | 230V | 50Hz | 2x4 kV | 12 mA | 100% | Grounded center | DVE CE |
| TRS815C | 230V | 50Hz | 2x4 kV | 15 mA | 100% | Grounded center | CE |
| TRS818C | 230V | 50Hz | 2x4 kV | 18 mA | 100% | Grounded center | CE |

INTERMITTENT | INTERMITTENTI

| | | | | | | | |
|---------|------|------|--------|-------|-----------|-----------------|--------|
| TRS820 | 230V | 50Hz | 2x4 kV | 20 mA | 25% on 4' | Grounded center | DVE CE |
| TRS1020 | 230V | 50Hz | 2x5 kV | 20 mA | 25% on 4' | Grounded center | DVE CE |
| TRS1020 | 230V | 50Hz | 2x5 kV | 20 mA | 33% on 3' | Grounded center | DVE CE |
| TRS1030 | 230V | 50Hz | 2x5 kV | 30 mA | 25% on 4' | Grounded center | CE |
| TRS1220 | 230V | 50Hz | 2x6 kV | 20 mA | 25% on 4' | Grounded center | CE |

Applications | Applicazioni



Available certification | Certificazioni disponibili

