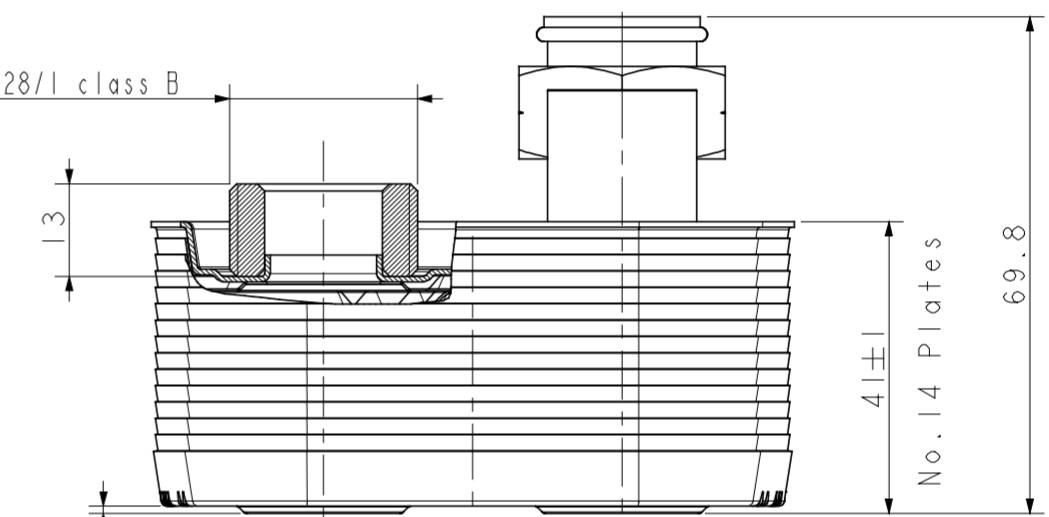
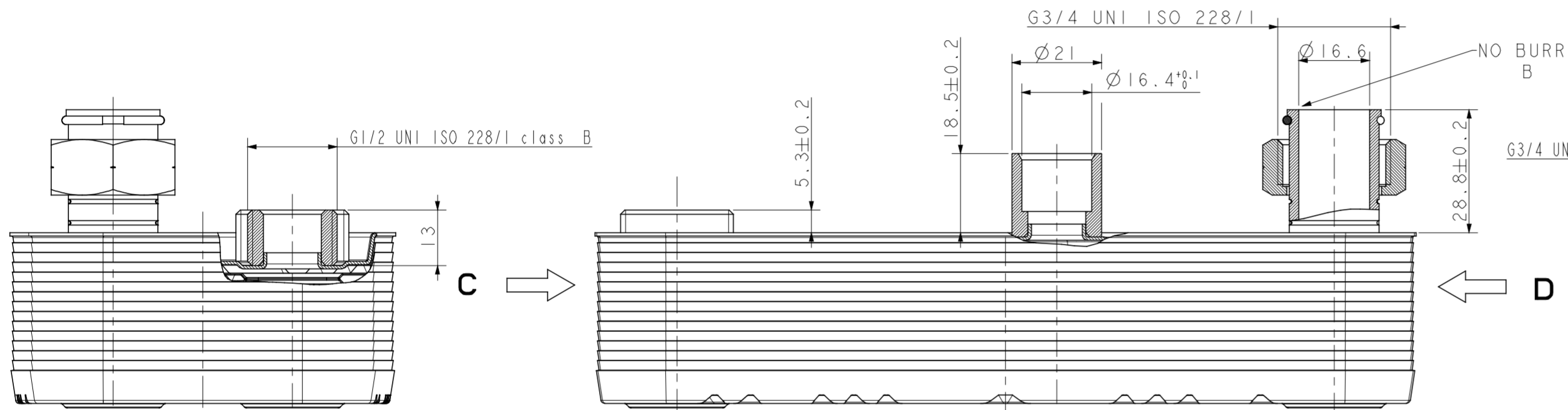
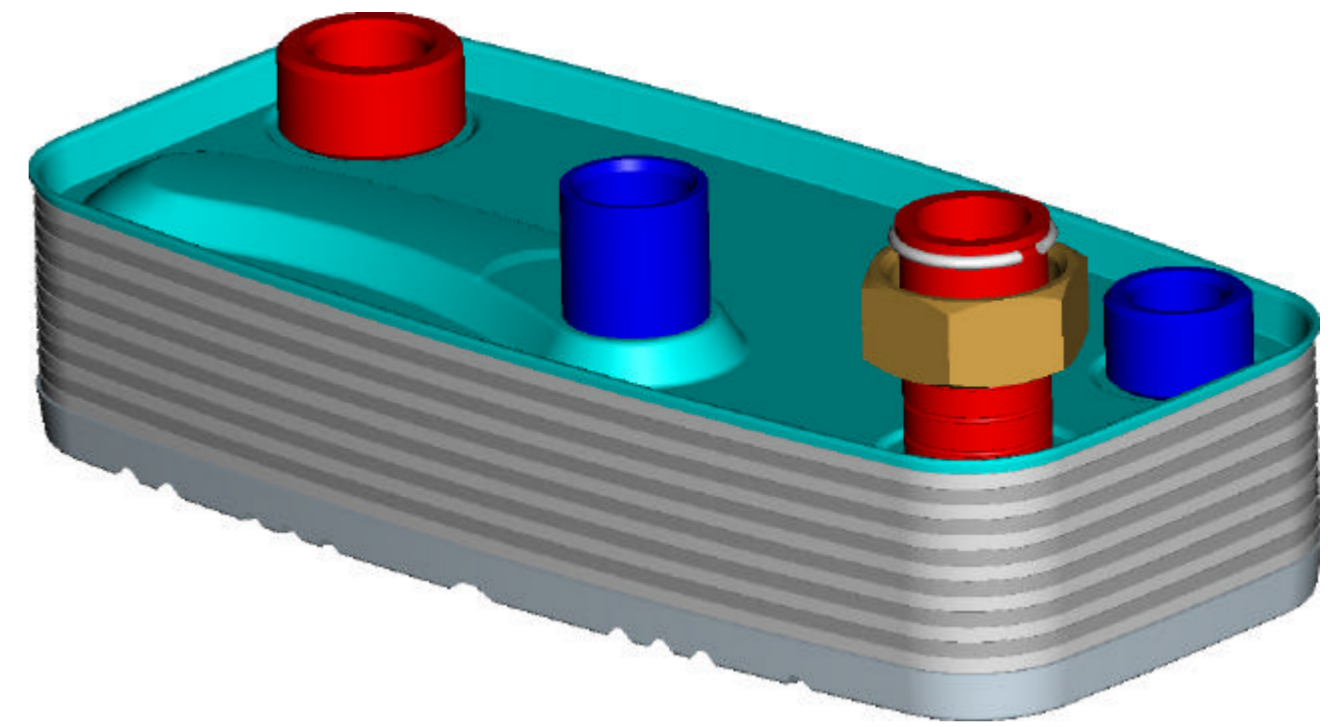
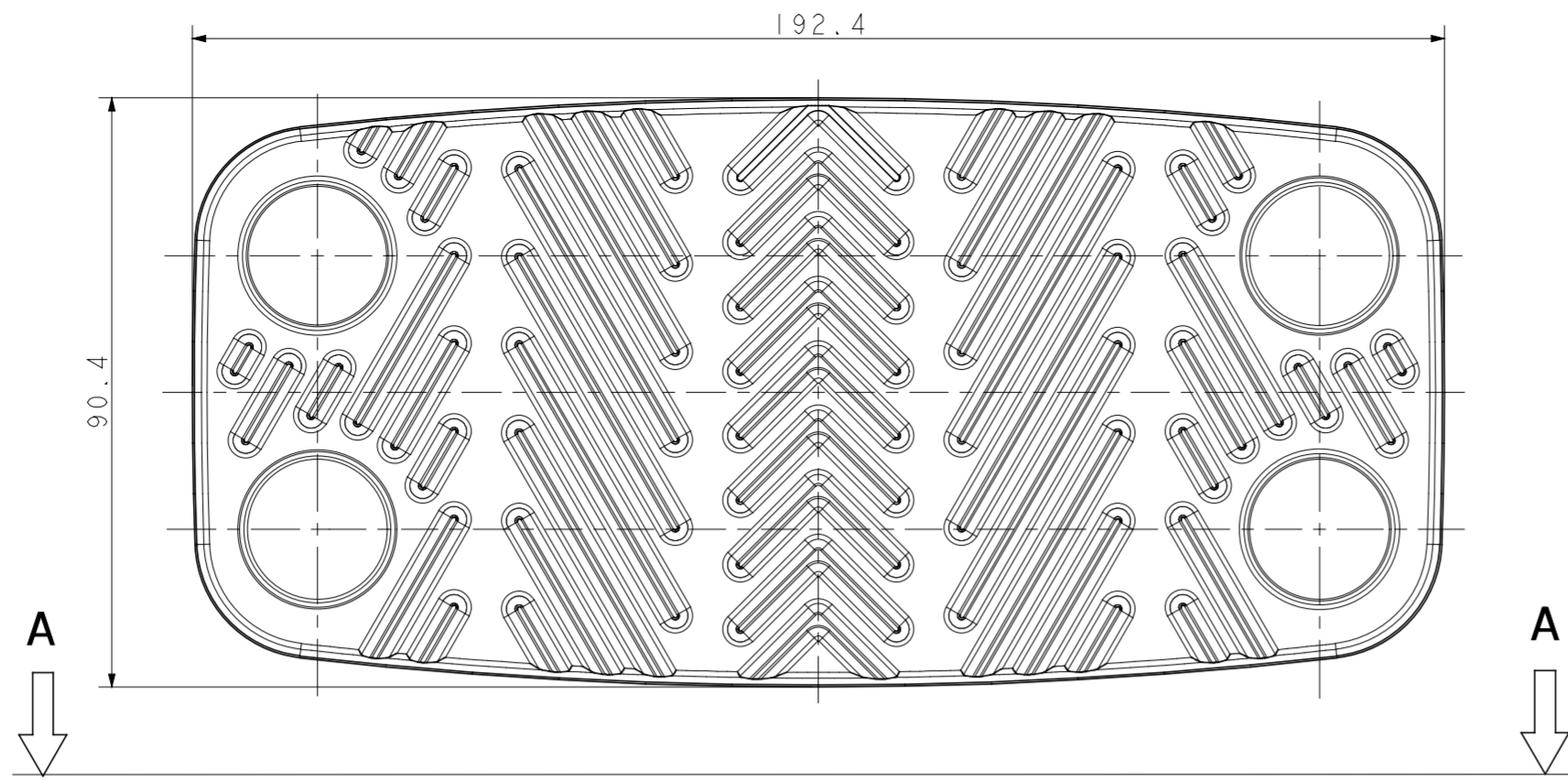
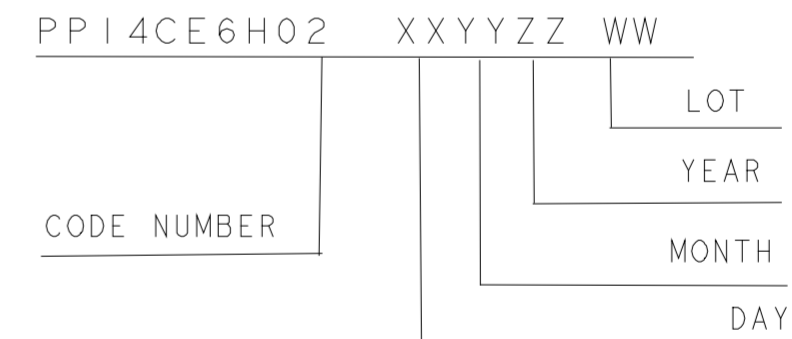


VIEW B - B

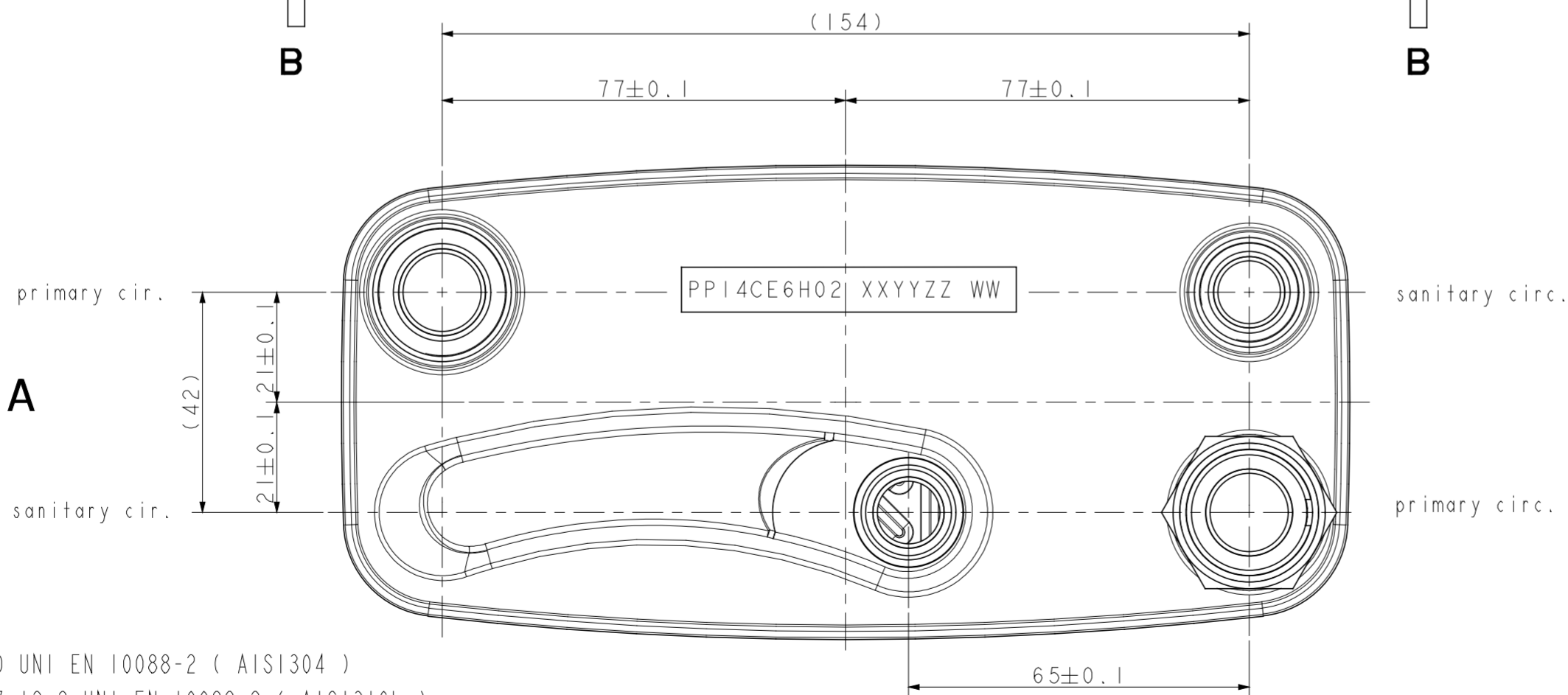


VIEW D - D

VIEW C - C



VIEW A - A



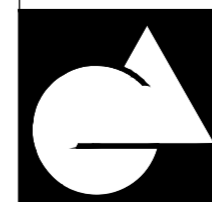
- MATERIALS**
- Keep Plate : X5CrNi 18-10 UNI EN 10088-2 (AISI304)
 - Flow Fins Plates : X2CrNiMo 17-12-2 UNI EN 10088-2 (AISI316L)
 - Final plate : X5CrNi 18-10 UNI EN 10088-2 (AISI304)
 - Connections : X5CrNi 18-10 UNI EN 10088-2 (AISI304) or X8CrNiS 18-9 UNI EN 10088-2 (AISI 303) as available
 - Nut : EN 12165 - CW617N
 - Copper Plate : Cu 99.9 %

TECHNICAL CHARACTERISTIC

Test conditions : 15 bar sanitary circuit
: 4.5 bar primary circuit

Maximum working conditions : 10 bar sanitary circuit
: 3 bar primary circuit

B	Added NO BURR and deleted lx45° on the connection	01/04/08	G.P.
A	Added Nut material	31/07/07	G.P.
REV.(ISSUE)	DESCRIZIONE (DESCRIPTION)	DATA (DATE)	DIS.(DRW)
DESCRIZIONE (DESCRIPTION)		Ra	
PLATE HEAT EXCHANGER type PCE14 (cross flow)		✓ ✓ ✓	
MATERIALE (MATERIAL)		SCALA (SCALE)	1 : 1
TOLL. GEN. (GEN.TOLL) +0.5		DATA (DATE)	20/07/07
FORMATO DISEGNO (DRAWING FORMAT) A2		CLIENTE (CUSTOMER)	
APPROVATO UT (T. D. APPROVAL)		DISEGNATORE (DRW)	G.P.
SOSTITUISCE		VERIFICATO (VERIFIED)	
SOSTITUITO DA		PPI4EH04A2/PPI4EH04A3	
N° CODICE (CODE N°)		PP14CE6H02	
N° DISEGNO (DRW N°)		TIPO	STATO
		PF	DF
		NUMERO	
		11964	



COMPONENTI PER CALDAIE
GIANNONI S.p.A
COMPONENTS FOR BOILERS

Sede legale :
via G. Leopardi, 20 20123 MILANO
Sede amministrativa e stabilimento:
via Milano, 49/51
26866 CASTIRAGA VIDARDO (LO) ITALY
Tel. : 0371/215.1
Fax : 0371/217014
http : www.giannoni.it

IL PRESENTE DISEGNO NON POTRA' ESSERE UTILIZZATO RIPRODOTTO O TRASMESSO A TERZI SENZA IL NOSTRO CONSENSO SCRITTO
THIS DRAWING CANNOT BE USED, REPRODUCED, TRANSFERRED TO OTHER PEOPLE WITHOUT OUR WRITTEN PERMISSION