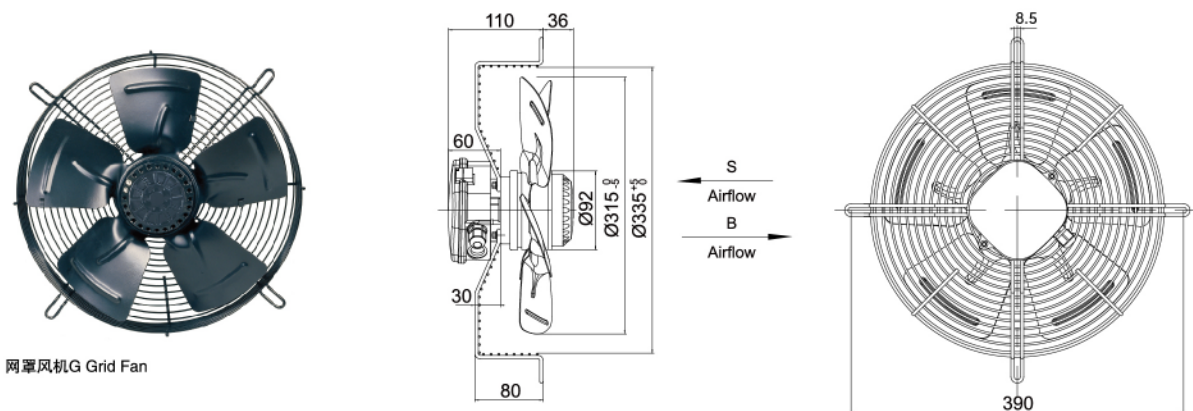


# AC 外转子轴流风机 Axial Fans $\Phi 315$

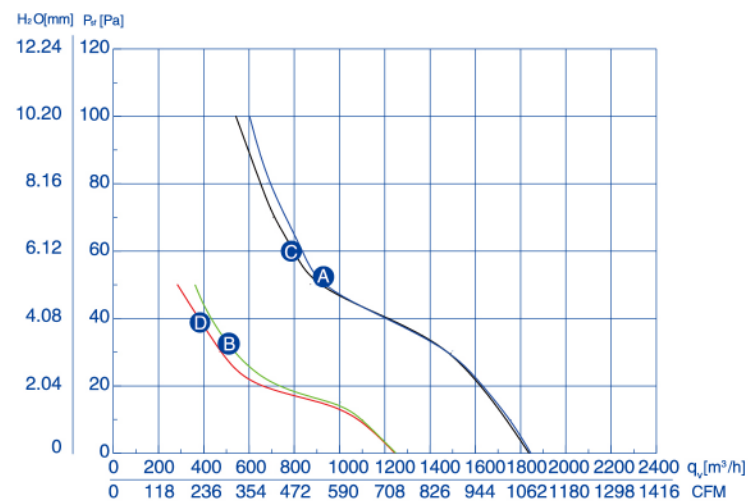


网罩风机G Grid Fan

工作方式: S1  
 绝缘等级: B、F  
 防护等级: IP44、IP54  
 环境温度:  $-30^{\circ}\text{C}$ ~ $60^{\circ}\text{C}$   
 认证: CCC、CE、UL

Mode of operation: S1  
 Insulation class: B、F  
 Type of protection: IP44、IP54  
 Ambient temperature:  $-30^{\circ}\text{C}$ ~ $60^{\circ}\text{C}$   
 Certificates: CCC、CE、UL

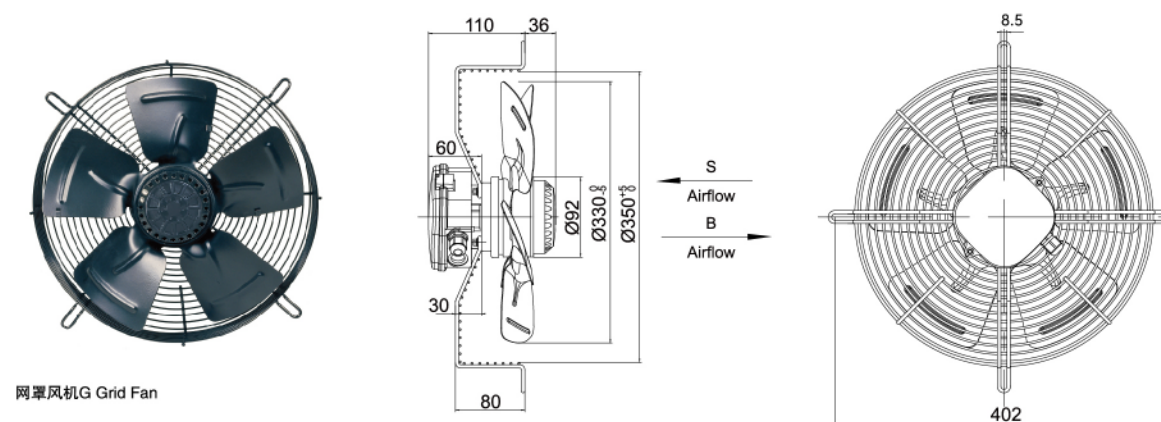
## 风量曲线



## 技术参数

型号	额定电压	频率	额定电流	输入功率	额定转速	电容	噪音	叶片数	净重	曲线	备注
TYPE	VOLTAGE	FREQUENCY	CURRENT	INPUT	SPEED	CAPACITANCE	NOISE	BLADE	NET WEIGHT	CURVE NO.	NOTE.
	V	Hz	A	W	r/min	$\mu\text{F}$	dBA		kg		
YWF4E-315S-92/35-G	220	50	0.45	95	1380	4	61	5	3.5	A	
YWF6E-315S-92/35-G	220	50	0.28	60	920	2	51	5	3.5	B	
YWF4D-315S-92/35-G	380	50	0.23	80	1380	/	61	5	3.5	C	
YWF6D-315S-92/35-G	380	50	0.16	55	920	/	51	5	3.5	D	

# AC 外转子轴流风机 Axial Fans $\Phi 330$

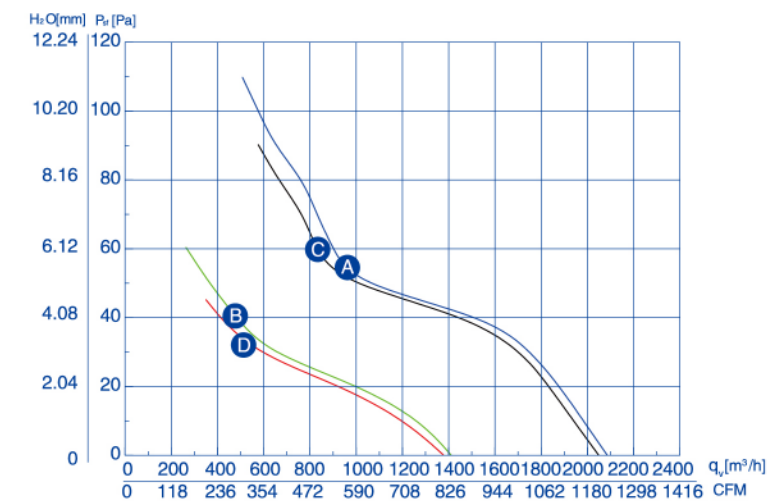


网罩风机G Grid Fan

工作方式: S1  
 绝缘等级: B、F  
 防护等级: IP44、IP54  
 环境温度:  $-30^{\circ}\text{C}$ ~ $60^{\circ}\text{C}$   
 认证: CCC、CE、UL

Mode of operation: S1  
 Insulation class: B、F  
 Type of protection: IP44、IP54  
 Ambient temperature:  $-30^{\circ}\text{C}$ ~ $60^{\circ}\text{C}$   
 Certificates: CCC、CE、UL

## 风量曲线



## 技术参数

型号	额定电压	频率	额定电流	输入功率	额定转速	电容	噪音	叶片数	净重	曲线	备注
TYPE	VOLTAGE	FREQUENCY	CURRENT	INPUT	SPEED	CAPACITANCE	NOISE	BLADE	NET WEIGHT	CURVE NO.	NOTE.
	V	Hz	A	W	r/min	$\mu\text{F}$	dBA		kg		
YWF4E-330S-92/35-G	220	50	0.50	100	1380	4	63	5	4.0	A	
YWF6E-330S-92/35-G	220	50	0.28	60	920	2	53	5	4.0	B	
YWF4D-330S-92/35-G	380	50	0.23	85	1380	/	63	5	4.0	C	
YWF6D-330S-92/35-G	380	50	0.15	55	920	/	53	5	4.0	D	

# AC 外转子轴流风机 Axial Fans $\Phi 350$

**网罩风机G Grid Fan**  
Dimensions: 115, 54°, 9.5, 422, 30, 80,  $\Phi 102$ ,  $\Phi 350$ ,  $\Phi 370$

**圆框风机R Round Frame Fan**  
Dimensions: 35, 15, 60, 30, 95,  $\Phi 360$ ,  $\Phi 370$

**圆筒风机T Cylinder Fan**  
Dimensions: 8, 180, 8,  $\Phi 350$ ,  $\Phi 421$

**方框风机B0 Square Frame Fan B0**  
Dimensions: 35, 15, 60, 30, 95,  $\Phi 360$ ,  $\Phi 380$

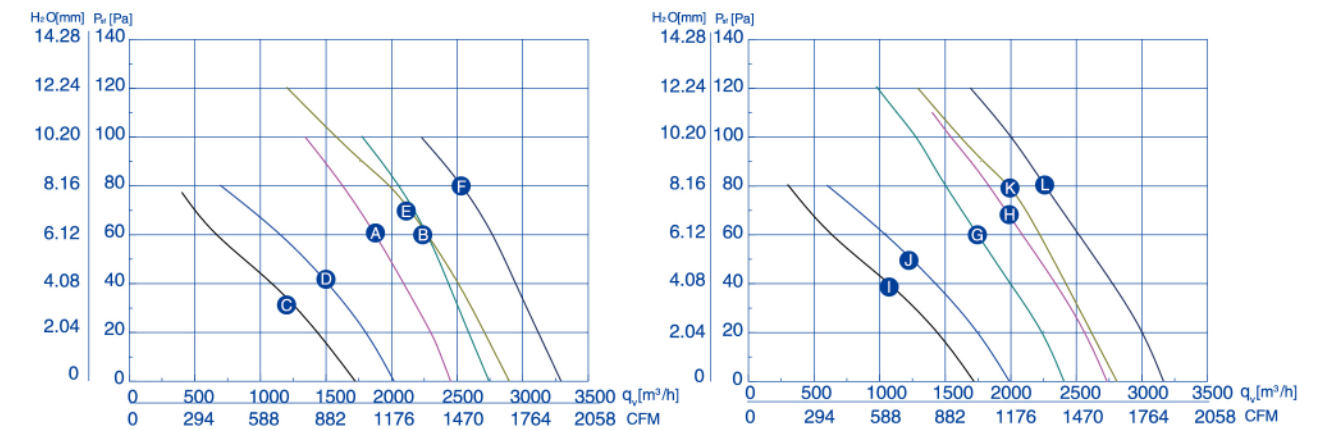
**方框风机B1 Square Frame Fan B1**  
Dimensions: 161, 125, 60, 30, 15,  $\Phi 350$ ,  $\Phi 360$

Top view details include: 4-M8,  $\Phi 460$ ,  $\Phi 442$ ,  $\Phi 415$ , 6- $\Phi 9$  通孔,  $\Phi 395.5$ , 8- $\Phi 9.5$ ,  $\Phi 415$  4- $\Phi 10.5$ , 4-M8, 4-35, 485, 4-35, 485



工作方式: S1  
 绝缘等级: B、F  
 防护等级: IP44、IP54  
 环境温度:  $-30^{\circ}\text{C}$ ~ $60^{\circ}\text{C}$   
 认证: CCC、CE、UL  
 能效指标: 符合ErP2015  
 Mode of operation: S1  
 Insulation class: B、F  
 Type of protection: IP44、IP54  
 Ambient temperature:  $-30^{\circ}\text{C}$ ~ $60^{\circ}\text{C}$   
 Certificates: CCC、CE、UL  
 Target energy efficiency: ErP2015

## 风量曲线



## 技术参数

型号	额定电压	频率	额定电流	输入功率	额定转速	电容	噪音	叶片数	净重	曲线	备注
TYPE	V	Hz	A	W	r/min	$\mu\text{F}$	dB(A)	BLADE	kg	CURVE NO.	NOTE.
YWF4E-350S-102/34	220	50	0.65	129	1400	4	64	5	5.0	A	
		60	0.77	165	1650		66			B	
YWF6E-350S-102/34	220	50	0.37	74	920	3	56	5	5.0	C	
		60	0.35	78	1100		57			D	
YWF4E-350S-102/47	220	50	0.75	165	1420	6	65	5	5.5	E	*67
		60	0.99	240	1650		67			F	*67
YWF4D-350S-102/34	380	50	0.40	129	1400	/	64	5	5.0	G	
		60	0.35	160	1650		66			H	
YWF6D-350S-102/34	380	50	0.32	80	920	/	56	5	5.0	I	
		60	0.25	80	1100		57			J	
YWF4D-350S-102/47	380	50	0.43	165	1420	/	65	5	5.5	K	*67
		60	0.45	240	1650		67			L	*67