

mod.  
**WDC-R**



Contatore Woltmann 130°C con uscita impulsiva  
Woltmann type 130°C with pulse output

MID  
Measuring Instrument Directive  
2014/32/EU - Approved

EN 1434



## IT

Woltmann orizzontale a meccanismo estraibile. Orologeria sigillata con trascinamento magnetico a lettura diretta su rulli numeratori. Equipaggiato con dispositivo lancia impulsivi. Abbinabile al calcolatore di energia termica mod. HYDROSPLIT-M3 per conformità a norma EN1434.

## EN

Horizontal Woltmann with removable insert. Sealed counter mechanism with magnetic transmission. Direct reading on numerical rolls. Equipped with pulse emitter device. Can be combined with the thermal energy calculator mod. HYDROSPLIT-M3 for compliance with the EN1434 standard.

## ES

Woltmann horizontal con tambor extraíble. Relojería sellada de arrastre magnético y lectura directa en los rodillos numerados. Equipado con sistema emisor de pulsos. Se puede combinar con el calculador de energía térmica mod. HYDROSPLIT-M3 para conformidad a la norma EN1434.

## FR

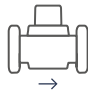
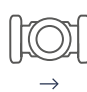
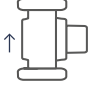
Compteur à hélice horizontale type Woltmann à tambour extractible, mécanisme de comptage étanche à transmission magnétique, lecture directe sur rouleaux numériques. Equipé avec émetteur impulsions. Peut-être combiné avec le calculateur d'énergie thermique mod. HYDROSPLIT-M3 pour se conformer à la norme EN1434.

## Caratteristiche tecniche

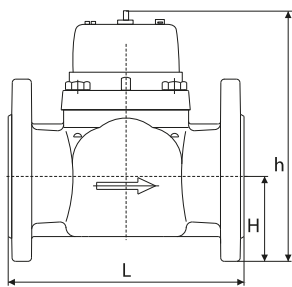
### Technical features

Calibro - Size	DN (in)	50 (2")	65 (2 1/2")	80 (3")	100 (4")	125 (5")	150 (6")	200 (8")	250 (10")	
<b>Portata Max</b> Max Flow Rate	qs	m <sup>3</sup> /h	30	60	90	140	200	300	500	1000
<b>Portata nominale</b> Nominal Flow Rate	qp	m <sup>3</sup> /h	15	25	40	60	100	150	250	400
<b>Portata minima</b> Min flow rate	qi	m <sup>3</sup> /h	0,6	1	1,6	2,4	4	6	10	40
<b>Sensibilità</b> Sensitivity		m <sup>3</sup> /h	0,25	0,3	0,35	0,6	1,1	2	4	8
<b>Lettura minima</b> Mini reading	L	0,5					5			
<b>Lettura massima</b> Max reading	m <sup>3</sup>	99.999					999.999			
<b>Pressione max ammissibile</b> Maximum admissible pressure	bar	16								
<b>Valore Impulso</b> Pulse Value	L	100								
<b>Rapporto qp/qi (H/V)</b> Range qp/qi (H/V)		R25							R10	

#### Posizione d'installazione - Installation position

		
R 10H ↑ R 25H ↑	R 10H → R 25H →	R 10V ↓ R 25V ↓

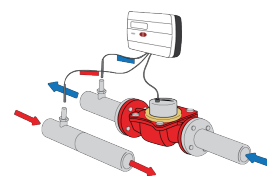
#### Dimensioni e pesi - Dimensions and Weights



Calibro - Size	DN (in)	50 (2")	65 (2 1/2")	80 (3")	100 (4")	125 (5")	150 (6")	200 (8")	250 (10")
<b>L</b>	mm	200	200	225	250	250	300	350	450
<b>H</b>	mm	72	83	95	105	120	135	160	193
<b>h</b>	mm	187	197	219	229	257	357	382	427
<b>Pesi Weight</b>	Kg	10,3	11	14	16	18,5	40,5	51,5	75,5

#### Versione base — Basic version

- > Classe accuratezza 3
- > Disponibile nella sola versione per acqua calda 0,1°C-130°C
- > Trasmissione magnetica
- > Lettura diretta su 6 rulli numeratori
- > Equipaggiato con sistema lancia impulsi
- > Quadrante asciutto orientabile a 360°
- > Classe protezione IP66
- > Accuracy class 3
- > Water temperature 0,1°C-130°C
- > Magnetic transmission
- > Direct reading on 6 numeric rolls
- > Equipped with pulse emitter device
- > Dry dial
- > 360° rotating dial
- > IP66 protection class



Esempio d'installazione su tubo di ritorno abbinato al calcolatore mod. HYDROSPLIT-M3.

Example of installation on return pipe combined with mod. HYDROSPLIT-M3 calculator.

Flange ISO 7005-2 / EN 1092-2 PN16