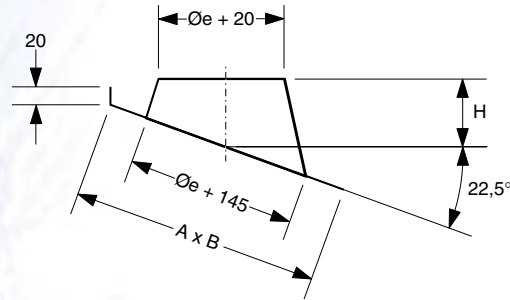
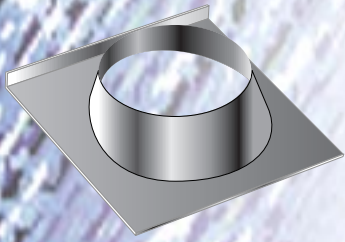


DP 616

Diametro interno \varnothing_i	Diametro esterno \varnothing_e	H (mm)	A x B (mm)
80	130	150	485x460
100	150	155	530x510
130	180	160	560x540
150	200	165	580x560
180	230	175	620x600
200	250	175	620x600
250	300	180	665x690



• Faldale per tetti inclinati

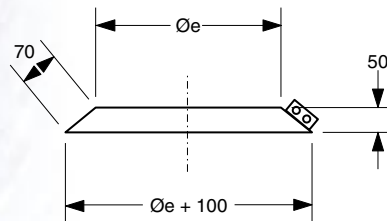
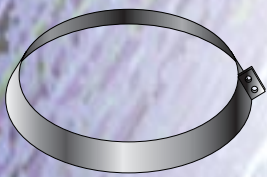
Consente di mantenere un'ottima tenuta nei casi di attraversamento dei tetti inclinati; va sempre completato con l'applicazione della scossalina di tenuta.

• Gutter for slanted roofs

It allows to have very good sealing when slanted roofs are passed through. It must have always its flashing.

DP 617

Diametro interno \varnothing_i	Diametro esterno \varnothing_e
80	130
100	150
130	180
150	200
180	230
200	250
250	300



• Scossalina di tenuta

Insieme al faldale contribuisce a mantenere un'ottima tenuta nei casi di attraversamento di tetti.

• Flashing

It allows to have a very good sealing together with the gutter, in case of passing through floor.