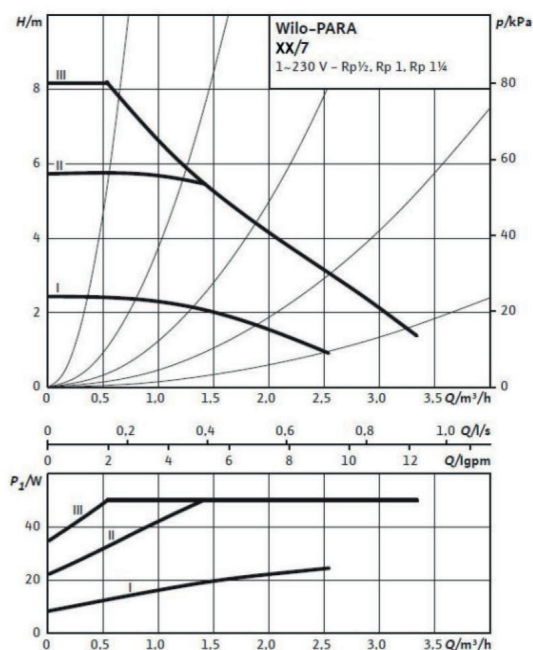
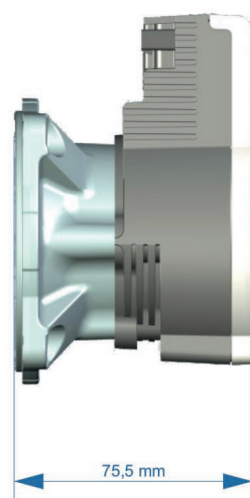
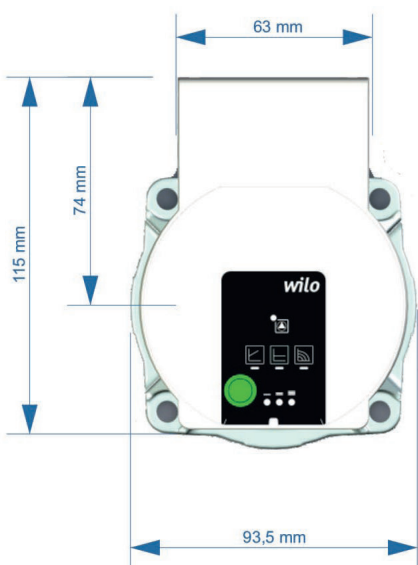
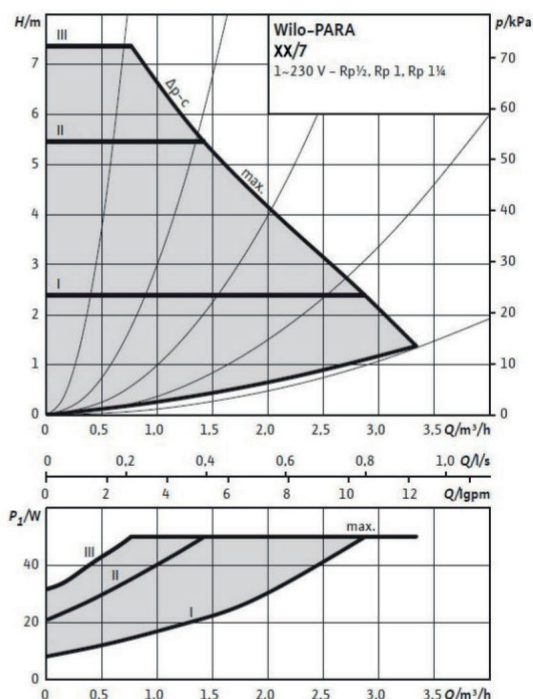
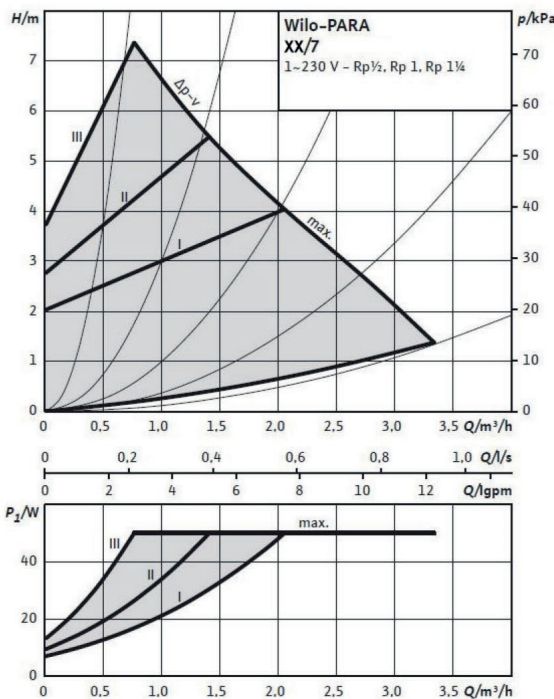


CIRCOLATORI

MOTPARA7M

Para	Prevalenza max.	Portata max.	Velocità	Consumo 1-230 V	Corrente 1-230 V	Protezione motore
	-	-	n	P1	I	-
	mt	m ³ /h	rpm	W	A	-
XX/7 SC	7,7	3,5	700 - 4700	8,2-50	0,07-0,43	Integrata



Codice

MOTPARA7M

Descrizione

MOTORE POMPA PARA 7-50/SC

Peso

0,8 Kg