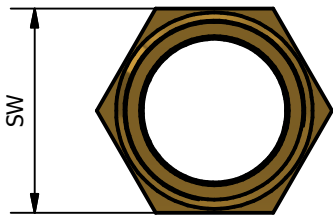
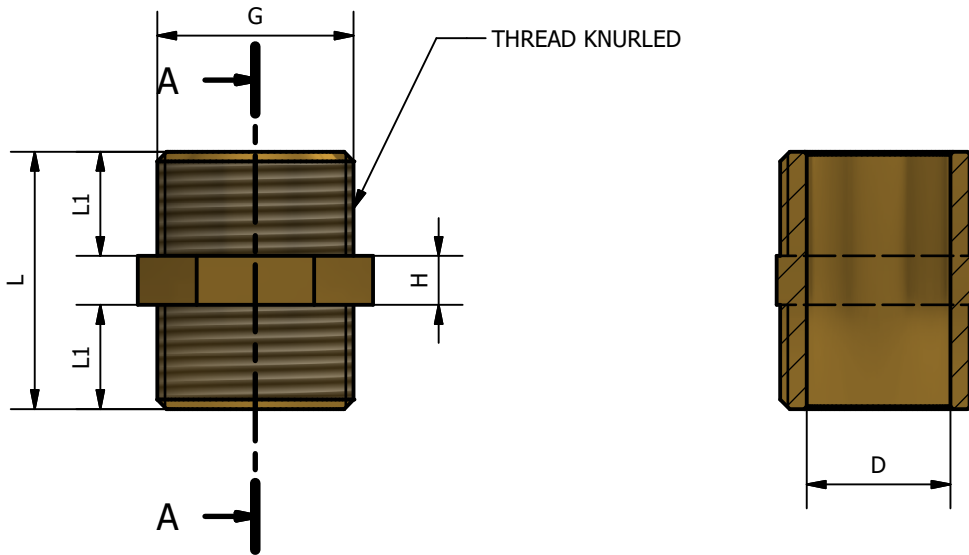


A-A ( 1 : 1 )



ARTICLE	SIZE	G	L	L1	D	H	SW
108SH 12	1/2	1/2	34	14	15	6	21
108SH 34	3/4	3/4	34	13,75	19	6,5	27
108SH 01	1"	1"	37	15	25	7	33
108SH P4	1"1/4	1"1/4	54	22	34	10	42
108SH P2	1"1/2	1"1/2	58	23	39	12	48
108SH 02	2"	2"	66	26	51	14	60

WORKING PRESSURE MAX from 1/8 to 1"1/4	16 BAR
WORKING PRESSURE MAX from 1"1/2 to 2"	10 BAR
WORKING TEMPERATURE MAX	120°C

CONFORMITY	
1) DM 174 del 6 Aprile 2004	
2) UNI EN ISO 228	
3) UNI EN 1254-4	

01	Aggiunte misure 1"1/4-1"1/2-2"	Delaini M.	28/01/2020
00	Prima emissione	Delaini M.	27/10/2013
Rev.	Nota Revisione	Approvatore	Data Approvazione
Toll Gen:	JS13	Stato sup.:	Giallo Tornito
Filetto:	ISO 228	Note tecniche:	
Peso lavorato:		Peso grezzo:	
		N° stampo:	
Codice: 108SH 34		Descrizione: Heavy nipples extended M/M	
Materiale: CW 617N EN12168		Disegnatore: Delaini P.	Data: 27/10/2013
TDM Brass s.r.l via Artigiani, 7-9 25030 Maclodio BS Italy tel +39 030 9972217 fax 030 9787089 www.tdmbrass.it email info@tdmbrass.it			

