

# ELECTRONIC TRANSFORMERS

TRASFORMATORI  
ELETTRONICI



10

Series	Type	Vin	Iout cc mA	ED	Output	Applications	page
--------	------	-----	------------------	----	--------	--------------	------



## TRK ELECTRONIC TRANSFORMERS | TRASFORMATORE ELETTRONICO TRK

	TRK1-20CVD	220-240V	<b>20</b>	100%	Grounded center		•	•	14
	TRK1-20PCVD	220-240V	<b>20</b>	100%	Grounded pole	•		•	15
	TRK1-30CVD	220-240V	<b>30</b>	100%	Grounded center		•	•	14
	TRK1-30CHD	220-240V	<b>30</b>	100%	Grounded center		•	•	18
	TRK1-30PCVD	220-240V	<b>30</b>	100%	Grounded pole	•		•	15
	TRK2-35	220-240V	<b>35</b>	33% on 3'	Grounded center		•		14
	TRK2-30PVD	220-240V	<b>30</b>	33% on 3'	Grounded pole	•			15
	TRK2-30PFVD	220-240V	<b>30</b>	33% on 3'	Grounded pole	•			15
	TRK2-30PVDUS	220-240V	<b>30</b>	33% on 3'	Grounded pole	•			15
	TRK2-30PFVDUS	220-240V	<b>30</b>	33% on 3'	Grounded pole	•			15
	TRK2-30PHD	220-240V	<b>30</b>	33% on 3'	Grounded pole	•			18
	TRK2-40VD	220-240V	<b>40</b>	33% on 3'	Grounded center		•		14
	TRK2-40HD	220-240V	<b>40</b>	33% on 3'	Grounded center		•		18
	TRK2-40HK	220-240V	<b>40</b>	33% on 3'	Grounded center		•		16
	TRK2-40HKL	220-240V	<b>40</b>	33% on 3'	Grounded center		•		16
	TRK2-40PVD	220-240V	<b>40</b>	33% on 3'	Grounded pole	•			15
	TRK2-40PHK	220-240V	<b>40</b>	33% on 3'	Grounded pole	•			17
	TRK2-40PHKL	220-240V	<b>40</b>	33% on 3'	Grounded pole	•			17
	TRK2-40SHK	220-240V	<b>40</b>	33% on 3'	Insulated		•		16
	TRK2-40SVD	220-240V	<b>40</b>	33% on 3'	Insulated		•		14
	TRK2-40PHD	220-240V	<b>40</b>	33% on 3'	Grounded center		•		18
	TRK1-20CUVD	120V	<b>20</b>	100%	Grounded center		•		14
	TRK1-20PCUVD	120V	<b>20</b>	100%	Grounded pole	•			15
	TRK2-30PUVD	120V	<b>26</b>	33% on 3'	Grounded pole	•			15
	TRK2-30PUFVD	120V	<b>26</b>	33% on 3'	Grounded pole	•			15
	TRK2-30UVD	120V	<b>30</b>	33% on 3'	Grounded center		•		14

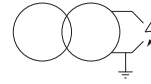
## TRJ ELECTRONIC TRANSFORMER | TRASFORMATORE ELETTRONICO TRJ

	TRJ2-30VD	220-240V	<b>21</b>	33% su 3'	Grounded center		•		19
	TRJ2-30PVD	220-240V	<b>20</b>	33% su 3'	Grounded pole	•			19
	TRJ3-40CVD	220-240V	<b>30</b>	100%	Grounded center		•	•	20

Transformers of widely used standards, produced in many different versions, with different powers and suitable for all applications on the market inputs and outputs configurations. Available in intermittent and continuous version for gas and oil applications, it is available filtered or unfiltered (F).

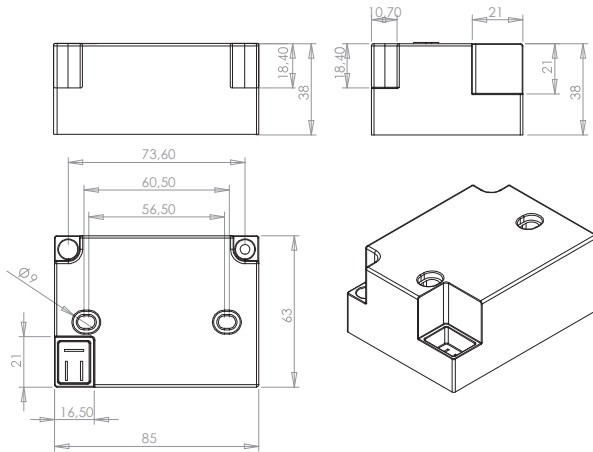
Trasformatore standard di larga diffusione, prodotto in numerose versioni diverse, con potenze diverse e configurazioni ingressi ed uscite adatte a tutte le applicazioni sul mercato. Disponibile in versione intermittente e continuo per applicazioni a gas e gasolio, ed è possibile averlo filtrato o non filtrato (F).

**STANDARD**



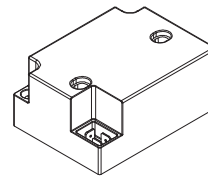
**1 POLE | 1 POLO**

**Technical drawing | Disegno tecnico [mm]**



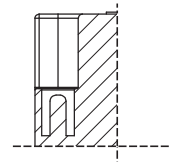
**Inlet | Ingressi**

**Plug D | Presa per spina D**



**Outlet | Uscite**

**V plug, vertical output plug, Ø 4mm | Spina A.T. Ø 4mm verticale V**



Type	Vin	Pin	Iout cc	Iout burn*	Vout	ED	Ta	Output	Note
<b>CONTINUOUS 100%   CONTINUI 100%</b>									
TRK1-20PCVD	220-240V	30W	20 mA	12 mA	1x15 kV	100%	60°C	Grounded pole	CE
TRK1-30PCVD	220-240V	30W	30 mA	17 mA	1x15 kV	100%	60°C	Grounded pole	CE
TRK1-20PCUVD	120V	30W	20 mA	12 mA	1x15 kV	100%	60°C	Grounded pole	CE
<b>INTERMITTENT   INTERMITTENTI</b>									
TRK2-30PVD	220-240V	63W	30 mA	20 mA	1x15 kV	33% on 3'	60°C	Grounded pole	CE
TRK2-30PFVD	220-240V	63W	30 mA	20 mA	1x15 kV	33% on 3'	60°C	Grounded pole	CE
TRK2-30PVDUS	230V	69W	30 mA	20 mA	1x15 kV	33% on 3'	60°C	Grounded pole	CE C RU US
TRK2-30PFVDUS	230V	69W	30 mA	20 mA	1x15 kV	33% on 3'	60°C	Grounded pole	CE C RU US
TRK2-40PVD	220-240V	65W	40 mA	24 mA	1x15 kV	33% on 3'	60°C	Grounded pole	CE
TRK2-30PUVD	120V	60W	36 mA	20 mA	1x15 kV	33% on 3'	60°C	Grounded pole	C RU US
TRK2-30PUFVD	120V	60W	36 mA	20 mA	1x15 kV	33% on 3'	60°C	Grounded pole	C RU US

\*Current measured on the burner with 5mm spark gap, blowing air and suppressed cables | Condizioni di lavoro su bruciatore con puntine a 5mm in aria soffiata con cavi resistivi.

**Applications | Applicazioni**



**Available certification | Certificazioni disponibili**

