



Series	Type	Vin	Vout [kV]	Iout cc [mA]	ED	Output	Applications	page
--------	------	-----	-----------	--------------	----	--------	--------------	------



**TRS INDUCTIVE TRANSFORMER | TRASFORMATORE INDUTTIVO TRS**



TRS513C	230V	2x2,5	<b>10</b>	100%	Grounded center			•	•	28
TRS812C	230V	2x4	<b>12</b>	100%	Grounded center		•		•	28
TRS815C	230V	2x4	<b>15</b>	100%	Grounded center				•	28
TRS818C	230V	2x4	<b>18</b>	100%	Grounded center		•		•	28
TRS820	230V	2x4	<b>20</b>	25% on 4'	Grounded center		•			28
TRS1020	230V	2x5	<b>20</b>	25% on 4'	Grounded center		•			28
TRS1020	230V	2x5	<b>20</b>	33% on 3'	Grounded center		•		•	28
TRS1030	230V	2x5	<b>30</b>	25% on 4'	Grounded center		•			28
TRS1220	230V	2x6	<b>20</b>	25% on 4'	Grounded center		•			28
TRS404PC	230V	1x4	<b>4</b>	100%	Grounded pole	•	•			29
TRS505PC	230V	1x5	<b>5</b>	100%	Grounded pole	•	•			29
TRS508PC	230V	1x5	<b>8</b>	100%	Grounded pole	•	•			29
TRS510PC	230V	1x5	<b>10</b>	100%	Grounded pole	•	•			29
TRS515PC	230V	1x5	<b>15</b>	100%	Grounded pole	•	•			29
TRS6.508PC	230V	1x6,5	<b>8</b>	100%	Grounded pole	•	•			29
TRS606PC	230V	1x6,5	<b>6</b>	100%	Grounded pole	•	•			29
TRS610PC	230V	1x6,5	<b>10</b>	100%	Grounded pole	•	•			29
TRS708PC	230V	1x7	<b>8</b>	100%	Grounded pole	•	•			29
TRS818PC	230V	1x8	<b>18</b>	100%	Grounded pole	•	•			29
TRS820P	230V	1x8	<b>20</b>	25% on 4'	Grounded pole	•	•			29
TRS723P US	120V	1x7	<b>23</b>	25% on 4'	Grounded pole	•	•			29
TRS820PISO	230V	1x8	<b>20</b>	33% on 3'	Insulated	•	•			29
TRS830P	230V	1x8	<b>30</b>	25% on 4'	Grounded pole	•	•			29
TRS1815C/IS	230V	1x2	<b>15</b>	100%	Insulated	•	•			29

# TRS

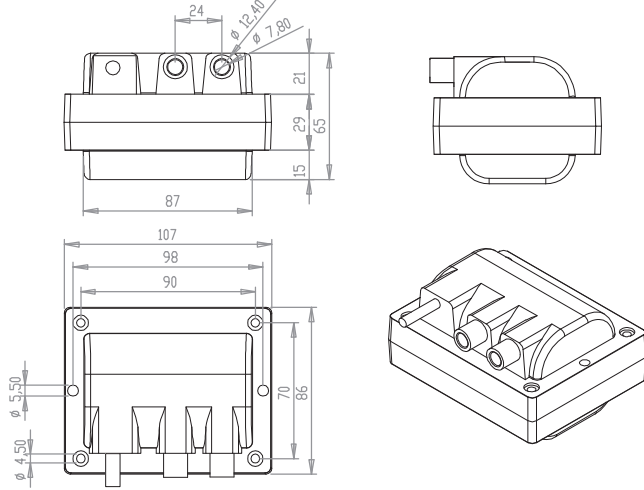


28

## 2 POLES | 2 POLI

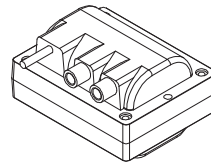


### Technical drawing | Disegno tecnico [mm]

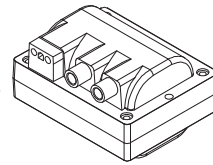


### Inlet | Ingressi

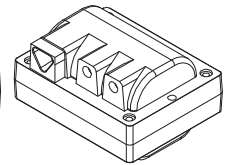
**Standard buried cable**  
Cavo annegato standard



**COFI plug**  
Presca per spina Cofi

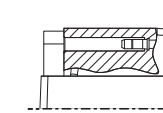


**Triangle plug**  
Presca spina Triangolo

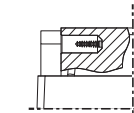


### Outlet | Uscite

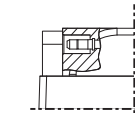
**Cod: SPRO**



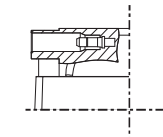
**Cod: VIRAS**



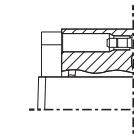
**Cod: SPRAS**



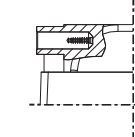
**Cod: SPMAN**



**Cod: SP**



**Cod: VIMAN**



Type	Vin	Freq	Vout	Iout	ED	Output	Note
<b>CONTINUOUS 100%   CONTINUI 100%</b>							
TRS513C	230V	50Hz	2x2,5 kV	10 mA	100%	Grounded center	CE
TRS810C	230V	50Hz	2x4 kV	10 mA	100%	Grounded center	DVE CE
TRS812C	230V	50Hz	2x4 kV	12 mA	100%	Grounded center	DVE CE
TRS815C	230V	50Hz	2x4 kV	15 mA	100%	Grounded center	CE
TRS818C	230V	50Hz	2x4 kV	18 mA	100%	Grounded center	CE

### INTERMITTENT | INTERMITTENTI

TRS820	230V	50Hz	2x4 kV	20 mA	25% on 4'	Grounded center	DVE CE
TRS1020	230V	50Hz	2x5 kV	20 mA	25% on 4'	Grounded center	DVE CE
TRS1020	230V	50Hz	2x5 kV	20 mA	33% on 3'	Grounded center	DVE CE
TRS1030	230V	50Hz	2x5 kV	30 mA	25% on 4'	Grounded center	CE
TRS1220	230V	50Hz	2x6 kV	20 mA	25% on 4'	Grounded center	CE

### Applications | Applicazioni



### Available certification | Certificazioni disponibili

