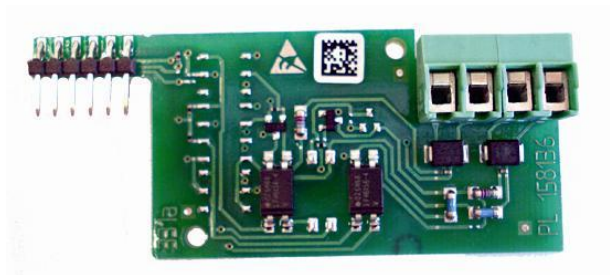


**Pulse module  
WZU-P2**



**Function description**

The pulse module WZU-P2 enables the meter to communicate with a pulse collector to transmit measured values. It outputs pulses that can be derived from the energy, volume, tariff register 1 or tariff register 2. Two channels are available; their function can be adapted using the service software.

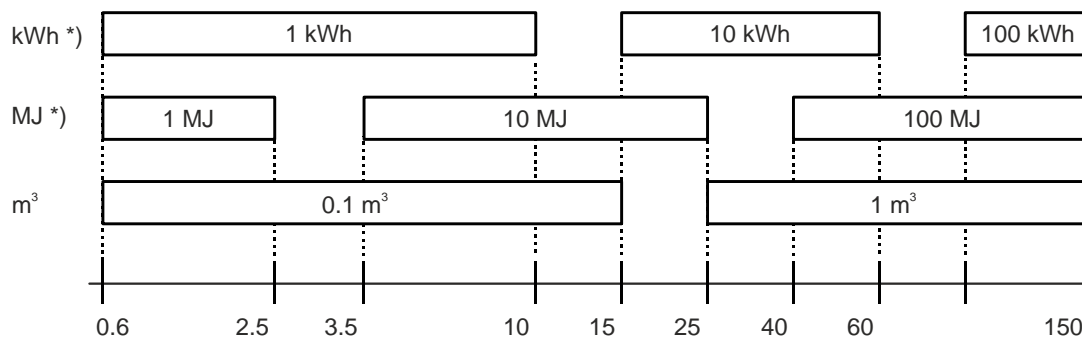
The outputs are in the form of standard pulses or "fast pulses". The pulse duration is identical for channel 1 and channel 2.



The module can be plugged into either of the 2 slots. Fast pulses can only be supplied on slot 2.

**Standard pulses**

Standard pulse valencies



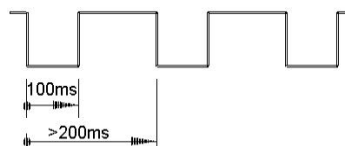
Continuous flow in m³/h

\*) depending on the unit for heat energy display

**Pulses for energy, volume, and tariff register**

Period duration >200 ms

Pulse duration: 100 ms conducting



## Pulse for operating states

"Ready"	Pulsed "conducting", i.e. 0.1...0.25 ms pulse duration, 500 ms period
"Fault"	Constant "non-conducting"



### Fast pulses

Applications, such as controllers or flow measuring sections, require higher pulse rates. The service software configures the parameters required for this purpose (pulse valency, pulse duration).

The maximum pulse frequency is 33 Hz.

## NOTICE



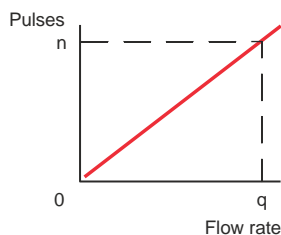
Use a D cell for battery operation.

The following can be set:

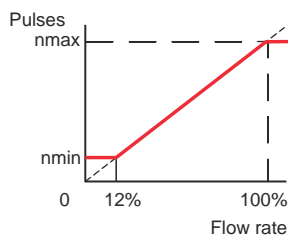
- Pulse type: "linear" or "scaled" pulses
- Pulse output: Energy or volume
- Pulse duration, if only 1 pulse module is fitted:
  - From 2 ms to 100 ms in increments of 1 ms
- Pulse duration, if 2 pulse modules are fitted:
  - From 5 ms to 100 ms in increments of 5 ms

A suitable device can be used to receive and evaluate the pulses. Enter the settings in accordance with the controller's data sheet.

Linear pulses are provided proportionally to the measured value. In the case of scaled pulses, the number of pulses at the upper and lower end of the range can be defined. In this case, the pulse receiving device can detect a wiring error, for example.



Linear pulses



Scaled pulses

Display on LCD

Connection of outputs  
(standard version):

**CE, C2, CV, CT or RI**

