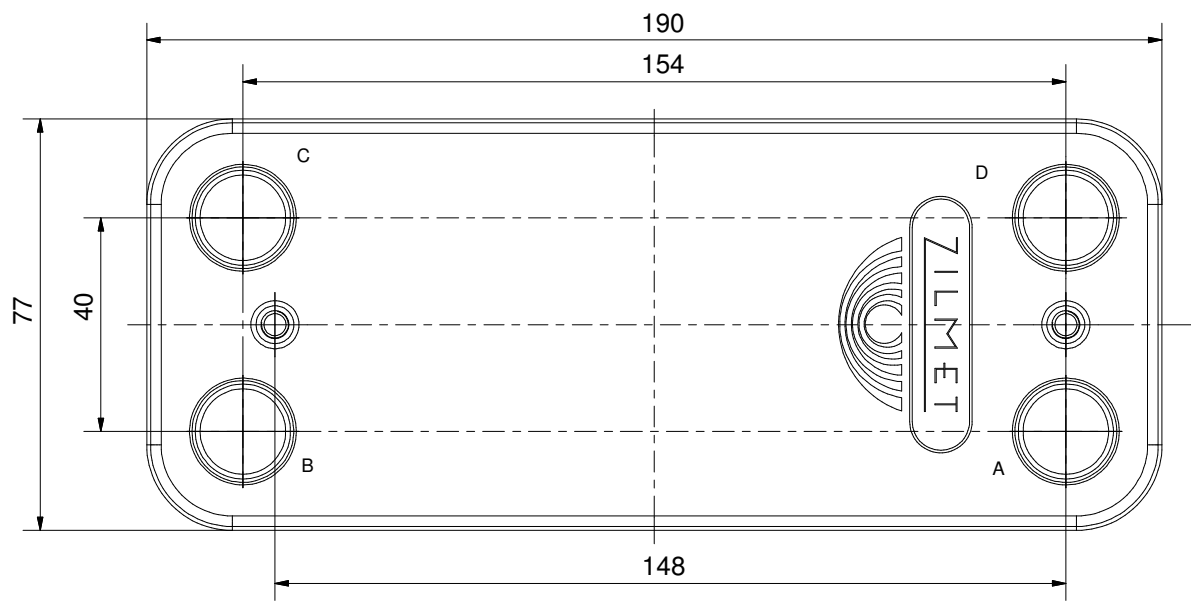
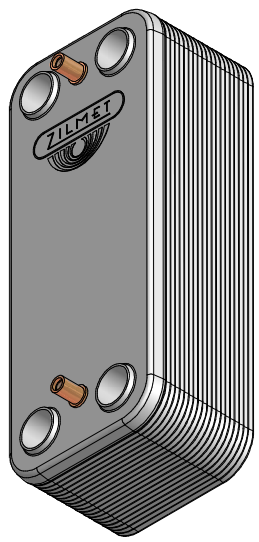



| CODE       | H  | N° OF PLATES |
|------------|----|--------------|
| 17B1900801 | 24 | 08           |
| 17B1901001 | 29 | 10           |
| 17B1901201 | 34 | 12           |
| 17B1901401 | 39 | 14           |
| 17B1901601 | 44 | 16           |
| 17B1901801 | 48 | 18           |
| 17B1902001 | 51 | 20           |
| 17B1902201 | 55 | 22           |
| 17B1902401 | 59 | 24           |
| 17B1902601 | 64 | 26           |
| 17B1902801 | 69 | 28           |
| 17B1903001 | 74 | 30           |



CIRCOLAZIONE FLUIDI CIRCUITO PRIMARIO C - D (PRIMARY CIRCUIT C - D)  
 CIRCUITO SECONDARIO A - B (SECONDARY CIRCUIT SANITARY A - B)

Pressione max esercizio (Max operating pressure):  
 Circuito Primario (Primary circuit): 3 bar  
 Circuito secondario (Secondary circuit): 8 bar  
 Temperatura esercizio (Max operating temperature): -10/+99 °C  
 Materiale (Material): INOX AISI 316L  
 Materiale di brasatura (Brazing material): 99.9% Cu

|  |  |              |                  |   |
|--|--|--------------|------------------|---|
| <br>35010 Limena (PD) Via del Santo 242 tel.049/8840662 | DIS.N°DRAWING N°<br><b>ZB 190</b>  |              |                  | <b>CODICE/CODE</b><br><b>17B190--01</b>   |
|  | <b>Denominazione/Denomination</b><br><b>SCAMBIATORE DI CALORE</b><br><b>SALDOBRASATO (HEAT EXCHANGERS)</b> | <b>Drawn</b> | <b>Date</b>      |   |
|  | <b>Checked</b>   | <b>Date</b>  | <b>Signature</b> | Disegno di proprietà della<br>Zilmet S.p.A.<br>Tutti i diritti riservati.<br>This drawing is property<br>of company ZILMET s.p.a.<br>All rights reserved. |
|  | <b>Approved</b>  | <b>Date</b>  | <b>Signature</b> |   |