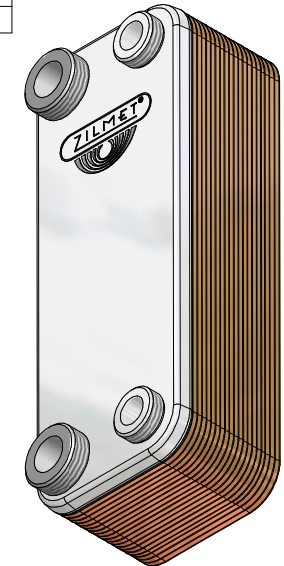
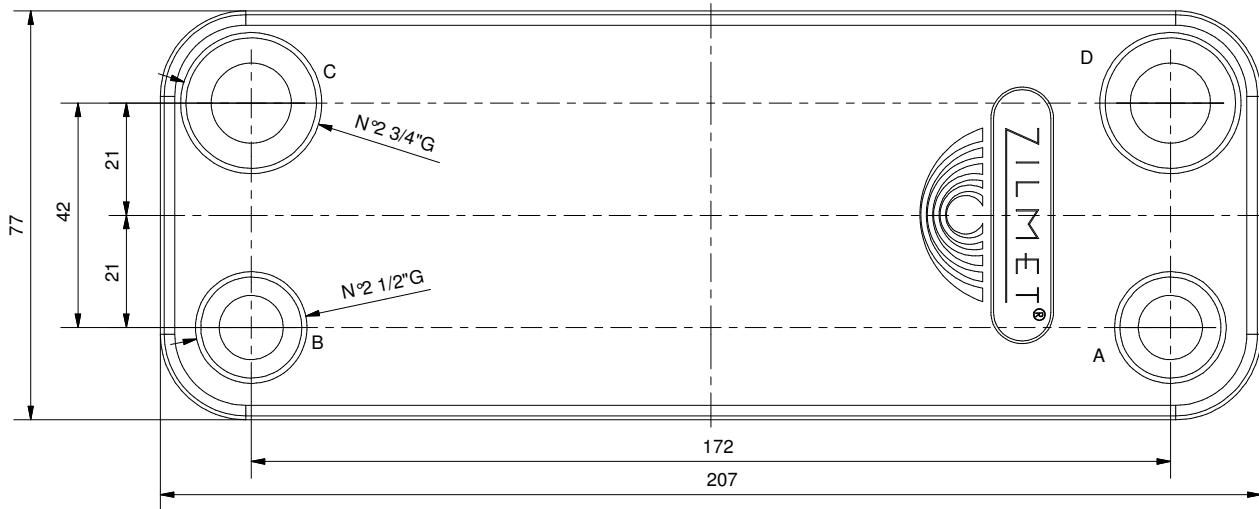



CODE	n° Plates	H
17B2071002	10	30
17B2071202	12	34
17B2071402	14	39
17B2071602	16	44
17B2071802	18	49
17B2072002	20	54
17B2072202	22	59
17B2072402	24	61
17B2072602	26	65
17B2072802	28	69
17B2073002	30	73



CIRCOLAZIONE FLUIDI CIRCUITO PRIMARIO ENTRATA IN C - USCITA IN D (PRIMARY CIRCUIT IN C - OUT D)  
CIRCUITO SECONDARIO ENTRTA IN A - USCITA IN B (SECONDARY CIRCUIT SANITARY IN A - OUT B)

Pressione max esercizio (Max operating pressure):  
 Circuito Primario (Primary circuit): 3 bar  
 Circuito secondario (Secondary circuit): 8 bar  
 Temperatura esercizio (Max operating temperature): -10/+99°C  
 Materiale (Material): INOX AISI 316L  
 Materiale di brasatura (Brazing material): 99.9% Cu  
 Materiale raccordi (Connection material): INOX AISI 316 1/2"G  
 FE 37 3/4"G

 35010 Limena (PD) Via del Santo 242 tel.049/8840662	DIS. N° / DRAWING N° <b>ZB 207</b>			<b>CODICE / CODE</b> <b>17B207--02</b>								
	Denominazione / Denomination <b>HEATING HEXCHANGER BRAZED</b>	<table border="1"> <tr><td>Drawn</td><td>Date</td><td>Signature</td></tr> <tr><td>Checked</td><td>Date</td><td>Signature</td></tr> <tr><td>Approved</td><td>Date</td><td>Signature</td></tr> </table>	Drawn			Date	Signature	Checked	Date	Signature	Approved	Date
Drawn	Date	Signature										
Checked	Date	Signature										
Approved	Date	Signature										