

## mod.CMC-R

Getto multiplo quadrante assoluto  
120°C con uscita impulsiva  
Multi Jet super-dry 120°C  
with pulse output



EN 1434



### Mod. CMC-R

Getto multiplo, quadrante assoluto, lettura diretta. Realizzato nella versione per acqua calda (120°C) nei calibri da  $\varnothing$  15 a 50 mm (1/2"  $\div$  2"). Equipaggiato con dispositivo lancia impulsivi.

**Abbinabile al calcolatore di energia termica mod.HYDROSPLIT per conformità a norma EN1434.**

### Mod. CMC-R

Vielfachwasserstrahl, trockenenes Ziffernblatt, Direktablesung. Produziert in der Versionen Warmwasser (120°C) in den Durchmesser von 15 bis 50 mm (1/2 Zoll  $\div$  2 Zoll). Mit Impulsausgang ausgestattet. **In Kombination mit dem Rechenwerk für thermische Energie mod.HYDROSPLIT gemäß Gesetz EN 1434**

### Mod. CMC-R

Multi Jet, dry dial, direct reading. Produced in the hot water version (120°C) in the diameters 15 to 50 mm (1/2"  $\div$  2"). Equipped with pulse emitter device.

**Can be combined with the thermal energy calculator mod. HYDROSPLIT for compliance with the standard EN1434.**

### Mod. CMC-R

Jets multiples, cadran sec à lecture directe, disponible en version eau chaude (120°C) et du calibre 15 au calibre 50 mm (de 1/2" à 2"). Equipé avec Emetteur impulsif. **Peut-être combiné avec le calculateur d'énergie thermique mod.HYDROSPLIT pour se conformer à la norme EN1434.**

### Mod. CMC-R

Chorro múltiple, esfera seca, lectura directa. Realizado en la versión para agua caliente (120°C) en los calibres de  $\varnothing$  15 a 50 mm (1/2"  $\div$  2").

Equipado con sistema emisor de pulsos. **Se puede combinar con el calculador de energía térmica mod. HYDROSPLIT para conformidad a la norma EN1434.**

### Мод. CMC-R

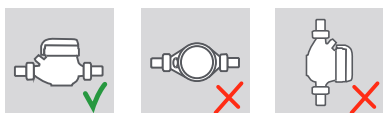
Многоструйный счетчик горячей (120°C) воды с сухим квадрантом и прямым считыванием. Выпускается диаметрами условного прохода от 15 до 50 мм (1/2" – 2").

Оборудован устройством передачи импульса. Комбинируется со счетчиком тепловой энергии мод. HYDROSPLIT в соответствии со стандартом EN1434.

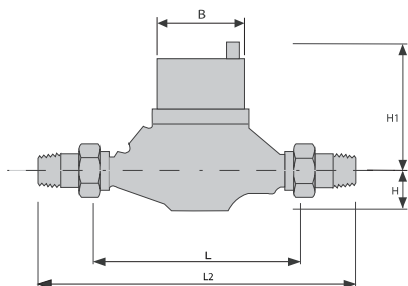
## Caratteristiche tecniche - Technical features

Calibro Size	DN	mm in	15 (1/2")	20 (3/4")	25 (1")	32 (1 1/4")	40 (1 1/2")	50 (2")
Portata Max Max Flow Rate	q <sub>s</sub>	m <sup>3</sup> /h	2,25	3,75	5,25	9	15	22,5
Portata nominale Nominal Flow Rate	q <sub>0</sub>	m <sup>3</sup> /h	1,5	2,5	3,5	6	10	15
Portata minima Min flow rate	q <sub>i</sub>	l/h	60	100	140	240	400	600
Sensibilità Sensitivity		l/h	12	19	25	35	60	90
Perdita di carico a Pressure loss at	q <sub>p</sub>	mbar	225	276	253	249	250	250
Letture minima Min reading		l	0,05	0,05	0,05	0,05	0,05	0,05
Letture massima Max reading		m <sup>3</sup>	99.999	99.999	99.999	99.999	99.999	99.999
Pressione max ammissibile Maximum admissible pres MAP		bar	16	16	16	16	16	16
Valore Impulso Pulse Value		l	1	1	10	10	10	10

### Posizione d'installazione - Installation position



### Dimensioni e pesi - Dimensions and Weights



Calibro Size	mm in	15 (1/2")	20 (3/4")	25 (1")	32 (1 1/4")	40 (1 1/2")	50 (2")
L	mm	165	190	260	260	300	270
B	mm	81	81	81	81	81	81
L 2	mm	245	288	378	378	438	430
H	mm	32	32	45	45	55	83
H 1	mm	138	138	150	150	155	180
Pesi Weight	kg	12,5	14	15	15,5	18	20

Filettatura - Threading EN ISO 228-1:2000

I contatori DN 50 possono essere forniti flangiati secondo ISO 7005-2 / EN 1092-2 PN16

The DN50 meters can be supplied flanged according to ISO 7005-2 / EN 1092-2 PN16

### Versione base - Basic version

- MID R25-H EN1434 2004/22/CE
- Classe accuratezza 3
- Disponibile nella sola versione per acqua calda 0°C-120°C
- Trasmissione magnetica
- Lettura diretta su 5 rulli numeratori
- Quadrante asciutto
- Orologeria anti-condensa
- Protezione anti frode magnetica
- Equipaggiato con sistema lancia-impulsi

- MID R25-H EN1434 2004/22/CE
- Accuracy class 3
- Available for hot water version 0°C-120°C only
- Magnetic transmission
- Direct reading on 5 numeric rolls
- Dry dial
- Anti-condensation dial
- Anti-magnetic fraud protection
- Equipped with pulse emitter device