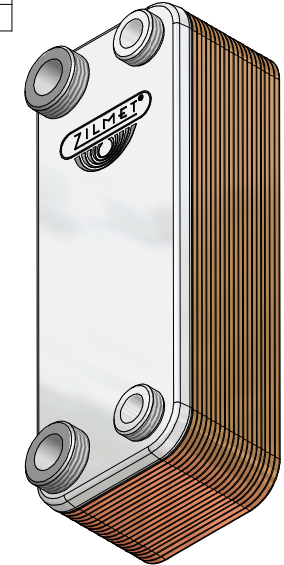
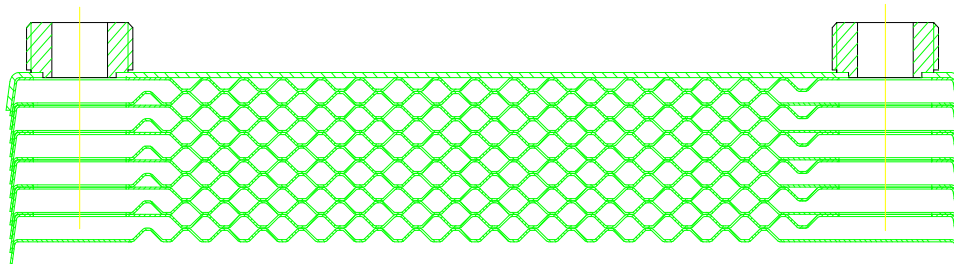


CODE	n° Plates	H
17B2071002	10	30
17B2071202	12	34
17B2071402	14	39
17B2071602	16	44
17B2071802	18	49
17B2072002	20	54
17B2072202	22	59
17B2072402	24	61
17B2072602	26	65
17B2072802	28	69
17B2073002	30	73



CIRCOLAZIONE FLUIDI CIRCUITO PRIMARIO ENTRATA IN C - USCITA IN D (PRIMARY CIRCUIT IN C - OUT D)
 CIRCUITO SECONDARIO ENTRTA IN A - USCITA IN B (SECONDARY CIRCUIT SANITARY IN A - OUT B)

Pressione max esercizio (Max operating pressure):
 Circuito Primario (Primary circuit): 3 bar
 Circuito secondario (Secondary circuit): 8 bar
 Temperatura esercizio (Max operating temperature): -10/+99°C
 Materiale (Material): INOX AISI 316L
 Materiale di brasatura (Brazing material): 99.9% Cu
 Materiale raccordi (Connection material): INOX AISI 316 1/2"G
 FE 37 3/4"G



REV	DESCRIZIONE	DATA
0	Issued for construction	11/01/02
1	Height dimensions	27/10/04
2	Height dimensions	26/01/2007

 35010 Limena (PD) Via del Santo 242 tel.049/8840662	DRAWING N° ZB 207		SCALE
	<small>*: Tolerance variation bigger/lower than 20% do not compromise the expansion vessel functioning</small>		
Denomination HEATING HEXCHANGER BRAZED	Drawn GIBIN G. Date 26/01/2007	Signature 	CODE 17B207--02 <small>This drawing is property of company ZILMET s.p.a. All rights reserved.</small>
	Checked PIROVANO M. Date 26/01/2007	Signature 	
	Approved S.R.I BENETTOLO	Date 26/01/2007	