

# EUROBATEX®

CFC and HCFC-free, GWP zero Flexible Elastomeric thermal insulation complying with the European Standard EN 14304. Available in form of **tubes, sheets, coils and self-adhesive tapes**, EUROBATEX® is a closed cell, integral vapour barrier material with a high emissivity surface making it the ideal product for condensation control on refrigeration, air conditioning and dual temperature services. It also has a **s2 smoke Classification** according to EN 13501-1 reaction to fire test for pipes and tapes. Thanks to its low thermal conductivity, EUROBATEX ensure, also at lower thicknesses, energy conservation, temperature control, personal protection or frost protection.

## APPLICATIONS FIELDS



Industrial



Air Conditioning



Building



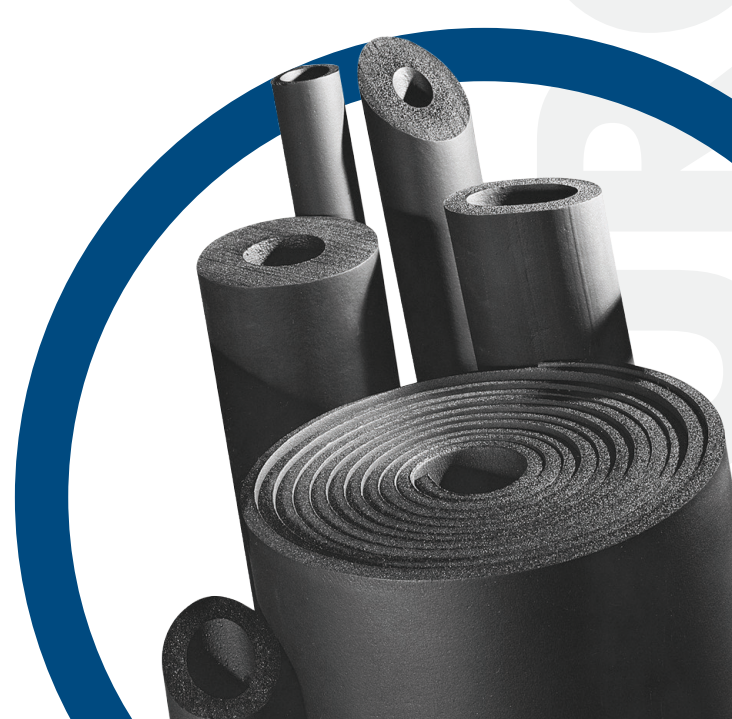
Refrigeration



Heating & Plumbing



Oil & Gas



## EUROBATEX®



<b>TYPE OF MATERIAL:</b>	Black closed-cell flexible elastomeric foam (FEF)
<b>PRODUCT RANGE:</b>	Tubes in pipe sections (also in self-adhesive version) and coils with thicknesses from 6 mm to 60 mm and diameters from 6 mm to 170 mm. Flat sheets or rolls (also in self-adhesive version) with thicknesses from 6 mm to 60 mm. Tapes with a thickness of 3 mm
<b>FIELDS OF APPLICATION:</b>	Thermal insulation of refrigeration, air conditioning and heating & plumbing services in commercial, industrial and domestic applications
<b>DIMENSIONAL TOLERANCES:</b>	In accordance with the European Standard EN 14304
<b>ENVIRONMENTAL INFORMATION:</b>	Flexible and expanded CFC and HCFC-free rubber foam. It does not damage the ozone layer (ODP zero) and does not contribute to the greenhouse effect (GWP zero). Environmental Product Declaration: registration number EPDITALY0093, released on 21/02/2020, 5 years validity, UNCPC code 3623
<b>ADDITIONAL INFORMATION:</b>	Self-adhesive material: acrylate based adhesive coating reinforced with mesh structure. Protection liner made of polyolefin or paper foil. Traces of silicon can be found on the foil protecting the self-adhesive coating
<b>STORAGE CONDITIONS/SHELF LIFE:</b>	Store the material in a dry and clean environment at a temperature between 0 °C and 35 °C and a RH between 50% and 70%. Do not expose the material to heat or direct sunlight when stored. Self-adhesive products should not be kept in storage for more than one year

PHYSICAL PROPERTIES	RESULT OBTAINED		TEST METHOD
<b>OPERATING TEMPERATURE RANGE*</b>	+110 °C - 45 °C ( -200 °C)*		EN 14706 / EN 14707
<b>THERMAL CONDUCTIVITY</b>	At a mean temperature of 0 °C	Tubes thk. ≤25 mm: λ ≤0,033 W/m-K Tubes thk. >25 mm: λ ≤0,035 W/m-K Sheets thk. ≤32 mm: λ ≤0,033 W/m-K Sheets thk. >32 mm: λ ≤0,034 W/m-K Tapes: λ ≤0,033 W/m-K	EN 12667 / EN ISO 8497
	At a mean temperature of +40 °C	Tubes thk. ≤25 mm: λ ≤0,037 W/m-K Tubes thk. >25 mm: λ ≤0,039 W/m-K Sheets thk. ≤32 mm: λ ≤0,037 W/m-K Sheets thk. >32 mm: λ ≤0,038 W/m-K Tapes: λ ≤0,037 W/m-K	
<b>WATER VAPOUR DIFFUSION RESISTANCE FACTOR</b>	Tubes thk. ≤19 mm: Sheets thk. ≤25 mm: Tapes: Tubes thk. ≥25 mm: Sheets thk. ≥30 mm:	μ ≥ 10000 μ ≥ 10000 μ ≥ 10000 μ ≥ 7000 μ ≥ 7000	EN 13469 / EN 12086
<b>WATER ABSORPTION</b>	<0,1 kg/m <sup>2</sup>		EN 13472 / EN 1609
<b>FIRE PERFORMANCE</b>	<b>European Standard Euroclass</b>	Tubes: B <sub>s</sub> -s2,d0 Sheets: B-s3,d0 Sheets 60 mm: E Tapes: B-s2,d0	EN 13501-1
	<b>FM Approval</b>	FM Approved Class 4924 Product Type: Pipe and Duct insulation	Test Procedure Class Number 4924 UCB Standard No. 26-3
	<b>USA, Canada</b>	UL Approved Flame Class V-0 Flame Class V-0, HF-1 - thk. 3 mm	UL 94 UL 746 A - UL 746 B
	<b>Shipyards (MED)</b>	Meets test requirements	IMO Res. MSC.307(88); IMO MSC/Circ. 1004 (Directive MED 2014/90/UE Modules B and D)
	<b>Swiss Reaction to Fire group</b>	Tubes: RF2 Sheets: RF2 (cr)	VKF Directive 13-15
<b>ANTIMICROBIAL BEHAVIOUR</b>	No fungal and bacterial growth detected		A.A.T.C.C. Test Method 30 ISO 22196
<b>CORROSION RISK</b>	Meets test requirements		EN 13468

\*NB: for application at temperatures lower than -45 °C, please contact our technical department.  
For self-adhesive sheets and tapes, the maximum operating temperature is +90 °C. For applications at higher temperatures please contact our technical department.

**System 1 CE Marking** in accordance with the European Standard EN 14304.  
Certification of Constancy of Performance issued by CSI S.p.A. - Bollate IT-20021.

The product meets the requirements for the achievement of the Eco-Bau classification.  
For outside uses Eurobatex should be protected with Union Covering or Vec elastomeric paint.  
All the normatives quoted in this document are updated to the latest issued versions.  
Ultra-Fresh is a registered trademark of Thomson Research Associates, Inc.  
Union Foam S.p.A. reserves the right to modify any information at any time without prior notice.

# EUROBATEX®

## PIPE SECTIONS 2 m LENGTH

Copper pipe		Steel pipe			PE/PP/PVC pipes	Thickness 6 mm		Thickness 9 mm		Thickness 13 mm	
Ext. Ø mm	Ext. Ø inches	Ext. Ø mm	DN	NPS	DN	Item No. thickness x ID	m/ct	Item No. thickness x ID	m/ct	Item No. thickness x ID	m/ct
6						06 - 06EUR 0	496	09 - 06EUR 0	352	13 - 06EUR 0	220
8						06 - 08EUR 0	432	09 - 08EUR 0	300	13 - 08EUR 0*	210
10	3/8	10,2	6	1/8		06 - 10EUR 0	364	09 - 10EUR 0	266	13 - 10EUR 0	172
12	1/2				12	06 - 12EUR 0	316	09 - 12EUR 0	234	13 - 12EUR 0	162
14		13,5	8	1/4		06 - 14EUR 0*	266	09 - 14EUR 0*	192	13 - 14EUR 0*	136
15	5/8				16	06 - 15EUR 0	266	09 - 15EUR 0	192	13 - 15EUR 0	136
18		17,2	10	3/8		06 - 18EUR 0	220	09 - 18EUR 0	166	13 - 18EUR 0	118
20	3/4				20	06 - 20EUR 0*	180	09 - 20EUR 0*	136	13 - 20EUR 0*	98
22	7/8	21,3	15	1/2		06 - 22EUR 0	180	09 - 22EUR 0	136	13 - 22EUR 0	98
25	1				25	06 - 25EUR 0*	152	09 - 25EUR 0*	108	13 - 25EUR 0*	80
28	1 1/8	26,9	20	3/4		06 - 28EUR 0	130	09 - 28EUR 0	98	13 - 28EUR 0	78
35	1 3/8	33,7	25	1		06 - 35EUR 0	100	09 - 35EUR 0	76	13 - 35EUR 0	58
38								09 - 38EUR 0*	66	13 - 38EUR 0*	50
42	1 5/8	42,4	32	1 1/4		06 - 42EUR 0	90	09 - 42EUR 0	60	13 - 42EUR 0	48
48		48,3	40	1 1/2				09 - 48EUR 0	50	13 - 48EUR 0	40
54	2 1/8							09 - 54EUR 0	46	13 - 54EUR 0	34
57								09 - 57EUR 0*	46	13 - 57EUR 0*	32
60		60,3	50	2				09 - 60EUR 0	46	13 - 60EUR 0	32
64								09 - 64EUR 0*	46	13 - 64EUR 0*	30
70								09 - 70EUR 0	40	13 - 70EUR 0*	26
76,1		76,1	65	2 1/2				09 - 76EUR 0	40	13 - 76EUR 0	26
80								09 - 80EUR 0*	36	13 - 80EUR 0*	24
88,9		88,9	80	3				09 - 90EUR 0	36	13 - 90EUR 0	24
101								09 - 101EUR 0	22	13 - 101EUR 0	16
108								09 - 108EUR 0*	22	13 - 108EUR 0*	16
114		114,3	100	4				09 - 114EUR 0	22	13 - 114EUR 0	16
127										13 - 127EUR 0*	12
133										13 - 133EUR 0*	12
140		139,7	125	5						13 - 139EUR 0*	12
159										13 - 160EUR 0*	12
168		168,3	150	6						13 - 168EUR 0*	10

\* Made to order  
Different thicknesses and diameters available on request

Packaging dimensions:  
(volume = 0,27 m<sup>3</sup>)



Pallet dimensions:

120 x 210 x 276 cm  
Volume = 6,95 m<sup>3</sup>  
Box/pallet = 24

120 x 210 x 243 cm  
Volume = 6,12 m<sup>3</sup>  
Box/pallet = 21



# EUROBATEX®

## PIPE SECTIONS 2 m LENGTH

Copper pipe		Steel pipe			PE/PP/PVC pipes	Thickness 19 mm		Thickness 25 mm		Thickness 32 mm	
Ext. Ø mm	Ext. Ø inches	Ext. Ø mm	DN	NPS	DN	Item No. thickness x ID	m/ct	Item No. thickness x ID	m/ct	Item No. thickness x ID	m/ct
10	3/8	10,2	6	1/8		19 - 10EUR 0	98				
12	1/2				12	19 - 12EUR 0	88				
14		13,5	8	1/4		19 - 14EUR 0*	78				
15	5/8				16	19 - 15EUR 0	78				
18		17,2	10	3/8		19 - 18EUR 0	72	25 - 18EUR 0	50	32 - 18EUR 0	32
20	3/4				20	19 - 20EUR 0*	66				
22	7/8	21,3	15	1/2		19 - 22EUR 0	64	25 - 22EUR 0	42	32 - 22EUR 0	32
25	1				25	19 - 25EUR 0*	50				
28	1 1/8	26,9	20	3/4		19 - 28EUR 0	48	25 - 28EUR 0	40	32 - 28EUR 0	24
35	1 3/8	33,7	25	1		19 - 35EUR 0	44	25 - 35EUR 0	32	32 - 35EUR 0	24
38						19 - 38EUR 0*	40				
42	1 5/8	42,4	32	1 1/4		19 - 42EUR 0	40	25 - 42EUR 0	26	32 - 42EUR 0	20
48		48,3	40	1 1/2		19 - 48EUR 0	32	25 - 48EUR 0	22	32 - 48EUR 0	18
54	2 1/8					19 - 54EUR 0	32	25 - 54EUR 0	22	32 - 54EUR 0	14
57											
60		60,3	50	2		19 - 60EUR 0	28	25 - 60EUR 0	18	32 - 60EUR 0	14
64						19 - 64EUR 0*	24	25 - 64EUR 0*	18	32 - 64EUR 0*	14
70						19 - 70EUR 0*	22	25 - 70EUR 0*	16	32 - 70EUR 0	10
76,1		76,1	65	2 1/2		19 - 76EUR 0	20	25 - 76EUR 0	16	32 - 76EUR 0	10
80						19 - 80EUR 0*	20	25 - 80EUR 0*	16	32 - 80EUR 0*	10
88,9		88,9	80	3		19 - 90EUR 0	16	25 - 90EUR 0	12	32 - 90EUR 0	10
101						19 - 101EUR 0	16	25 - 101EUR 0*	10	32 - 101EUR 0*	8
108						19 - 108EUR 0*	16	25 - 108EUR 0*	10	32 - 108EUR 0*	8
114		114,3	100	4		19 - 114EUR 0	14	25 - 114EUR 0	10	32 - 114EUR 0	8
127						19 - 127EUR 0*	10				
133						19 - 133EUR 0*	8	25 - 133EUR 0*	6	32 - 133EUR 0*	6
140		139,7	125	5		19 - 139EUR 0*	8	25 - 139EUR 0*	6	32 - 139EUR 0*	6
159						19 - 160EUR 0*	8	25 - 160EUR 0*	4	32 - 160EUR 0*	4
168		168,3	150	6		19 - 168EUR 0*	8	25 - 168EUR 0*	4	32 - 168EUR 0*	4

\* Made to order  
Different thicknesses and diameters available on request

**Packaging dimensions:**  
(volume = 0,27 m<sup>3</sup>)



**Pallet dimensions:**

120 x 210 x 276 cm  
Volume = 6,95 m<sup>3</sup>  
Box/pallet = 24

120 x 210 x 243 cm  
Volume = 6,12 m<sup>3</sup>  
Box/pallet = 21



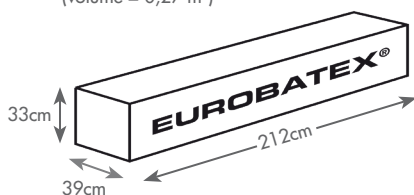
# EUROBATEX®

## SELF-ADHESIVE PIPE SECTIONS 2 m LENGTH

Copper pipe		Steel pipe			PE/PP/PVC pipes	Thickness 6 mm		Thickness 9 mm		Thickness 13 mm	
Ext. Ø mm	Ext. Ø inches	Ext. Ø mm	DN	NPS	DN	Item No. thickness x ID	m/ct	Item No. thickness x ID	m/ct	Item No. thickness x ID	m/ct
12	1/2				12	06 - 12EUR 0 AD2*	316	09 - 12EUR 0 AD2	234	13 - 12EUR 0 AD2	162
14		13,5	8	1/4				09 - 14EUR 0 AD2*	192	13 - 14EUR 0 AD2*	136
15	5/8				16			09 - 15EUR 0 AD2	192	13 - 15EUR 0 AD2	136
18		17,2	10	3/8		06 - 18EUR 0 AD2*	220	09 - 18EUR 0 AD2	166	13 - 18EUR 0 AD2	118
20	3/4				20			09 - 20EUR 0 AD2*	136	13 - 20EUR 0 AD2*	98
22	7/8	21,3	15	1/2		06 - 22EUR 0 AD2*	180	09 - 22EUR 0 AD2	136	13 - 22EUR 0 AD2	98
25					25			09 - 25EUR 0 AD2*	108	13 - 25EUR 0 AD2*	80
28	1 1/8	26,9	20	3/4		06 - 28EUR 0 AD2*	130	09 - 28EUR 0 AD2	98	13 - 28EUR 0 AD2	78
35	1 3/8	33,7	25	1		06 - 35EUR 0 AD2*	100	09 - 35EUR 0 AD2	76	13 - 35EUR 0 AD2	58
38								09 - 38EUR 0 AD2*	66	13 - 38EUR 0 AD2*	50
42	1 5/8	42,4	32	1 1/4				09 - 42EUR 0 AD2	60	13 - 42EUR 0 AD2	48
48		48,3	40	1 1/2				09 - 48EUR 0 AD2	50	13 - 48EUR 0 AD2	40
54	2 1/8							09 - 54EUR 0 AD2	46	13 - 54EUR 0 AD2	34
57								09 - 57EUR 0 AD2*	46	13 - 57EUR 0 AD2*	32
60		60,3	50	2				09 - 60EUR 0 AD2	46	13 - 60EUR 0 AD2	32
64								09 - 64EUR 0 AD2*	46	13 - 64EUR 0 AD2*	30
70								09 - 70EUR 0 AD2	40	13 - 70EUR 0 AD2*	26
76,1		76,1	65	2 1/2				09 - 76EUR 0 AD2	40	13 - 76EUR 0 AD2	26
80								09 - 80EUR 0 AD2*	36	13 - 80EUR 0 AD2*	24
88,9		88,9	80	3				09 - 90EUR 0 AD2	36	13 - 90EUR 0 AD2	24
101										13 - 101EUR 0 AD2	16
108										13 - 108EUR 0 AD2*	16
114		114,3	100	4						13 - 114EUR 0 AD2	16

\* Made to order  
Version with overlap available on request.  
Tubes supplied with an adhesive stripe on both sides.

**Packaging dimensions:**  
(volume = 0,27 m<sup>3</sup>)



**Pallet dimensions:**

120 x 210 x 276 cm  
Volume = 6,95 m<sup>3</sup>  
Box/pallet = 24

120 x 210 x 243 cm  
Volume = 6,12 m<sup>3</sup>  
Box/pallet = 21



# EUROBATEX®

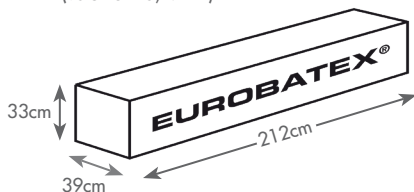
## SELF-ADHESIVE PIPE SECTIONS 2 m LENGTH

Copper pipe		Steel pipe			PE/PP/PVC pipes	Thickness 19 mm		Thickness 25 mm		Thickness 32 mm	
Ext. Ø mm	Ext. Ø inches	Ext. Ø mm	DN	NPS	DN	Item No. thickness x ID	m/ct	Item No. thickness x ID	m/ct	Item No. thickness x ID	m/ct
12	1/2				12	19 - 12EUR 0 AD2	88				
14		13,5	8	1/4		19 - 14EUR 0 AD2*	78				
15	5/8				16	19 - 15EUR 0 AD2	78				
18		17,2	10	3/8		19 - 18EUR 0 AD2	72	25 - 18EUR 0 AD2	50	32 - 18EUR 0 AD2	32
20	3/4				20	13 - 20EUR 0 AD2*	66				
22	7/8	21,3	15	1/2		19 - 22EUR 0 AD2	64	25 - 22EUR 0 AD2	42	32 - 22EUR 0 AD2	32
25					25	19 - 25EUR 0 AD2*	50				
28	1 1/8	26,9	20	3/4		19 - 28EUR 0 AD2	48	25 - 28EUR 0 AD2	40	32 - 28EUR 0 AD2	24
35	1 3/8	33,7	25	1		19 - 35EUR 0 AD2	44	25 - 35EUR 0 AD2	32	32 - 35EUR 0 AD2	24
38						19 - 38EUR 0 AD2*	40				
42	1 5/8	42,4	32	1 1/4		19 - 42EUR 0 AD2	40	25 - 42EUR 0 AD2	26	32 - 42EUR 0 AD2	20
48		48,3	40	1 1/2		19 - 48EUR 0 AD2	32	25 - 48EUR 0 AD2	22	32 - 48EUR 0 AD2	18
54	2 1/8					19 - 54EUR 0 AD2	32	25 - 54EUR 0 AD2	22	32 - 54EUR 0 AD2	14
57											
60		60,3	50	2		19 - 60EUR 0 AD2	28	25 - 60EUR 0 AD2	18	32 - 60EUR 0 AD2	14
64						19 - 64EUR 0 AD2*	24	25 - 64EUR 0 AD2*	18	32 - 64EUR 0 AD2*	14
70						19 - 70EUR 0 AD2*	22	25 - 70EUR 0 AD2*	16	32 - 70EUR 0 AD2	10
76,1		76,1	65	2 1/2		19 - 76EUR 0 AD2	20	25 - 76EUR 0 AD2	16	32 - 76EUR 0 AD2	10
80						19 - 80EUR 0 AD2*	20	25 - 80EUR 0 AD2*	16	32 - 80EUR 0 AD2*	10
88,9		88,9	80	3		19 - 90EUR 0 AD2	16	25 - 90EUR 0 AD2	12	32 - 90EUR 0 AD2	10
101						19 - 101EUR 0 AD2	16	25 - 101EUR 0 AD2*	10	32 - 101EUR 0 AD2*	8
108						19 - 108EUR 0 AD2*	16	25 - 108EUR 0 AD2*	10	32 - 108EUR 0 AD2*	8
114		114,3	100	4		19 - 114EUR 0 AD2	14	25 - 114EUR 0 AD2	10	32 - 114EUR 0 AD2	8

\* Made to order  
Version with overlap available on request.  
Tubes supplied with an adhesive stripe on both sides.



**Packaging dimensions:**  
(volume = 0,27 m<sup>3</sup>)



**Pallet dimensions:**

120 x 210 x 276 cm  
Volume = 6,95 m<sup>3</sup>  
Box/pallet = 24

120 x 210 x 243 cm  
Volume = 6,12 m<sup>3</sup>  
Box/pallet = 21



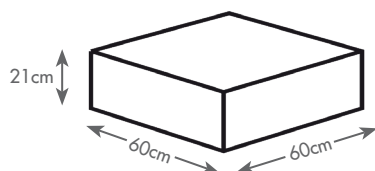
# EUROBATEX®

## COILS

Internal Ø	Thickness 6 mm		Thickness 9 mm		Thickness 13 mm	
mm	Item No. thickness x ID	m/ct	Item No. thickness x ID	m/ct	Item No. thickness x ID	m/ct
6	06 - 06EUR 0 ROT*	95	09 - 06EUR 0 ROT	70	13 - 06EUR 0 ROT	45
10	06 - 10EUR 0 ROT*	75	09 - 10EUR 0 ROT	50	13 - 10EUR 0 ROT	35
12	06 - 12EUR 0 ROT*	65	09 - 12EUR 0 ROT	45	13 - 12EUR 0 ROT	32
15	06 - 15EUR 0 ROT*	55	09 - 15EUR 0 ROT	40	13 - 15EUR 0 ROT	32
18	06 - 18EUR 0 ROT*	45	09 - 18EUR 0 ROT	38	13 - 18EUR 0 ROT	30
20	06 - 20EUR 0 ROT*	40	09 - 20EUR 0 ROT	34	13 - 20EUR 0 ROT	28
22	06 - 22EUR 0 ROT*	40	09 - 22EUR 0 ROT	30	13 - 22EUR 0 ROT	26
28	06 - 28EUR 0 ROT*	30	09 - 28EUR 0 ROT	26	13 - 28EUR 0 ROT	20

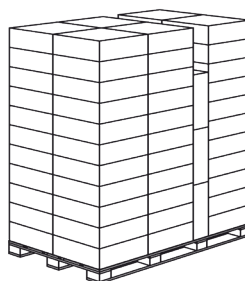
\* Made to order

**Packaging dimensions:**  
(volume = 0,07 m<sup>3</sup>)



**Pallet dimensions:**

120 x 210 x 243 cm  
Volume = 6,12 m<sup>3</sup>  
Box/pallet = 72



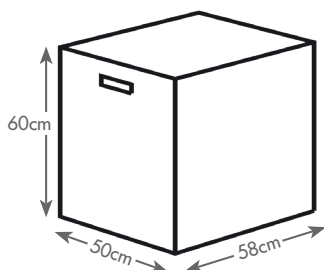
# EUROBATEX® ECQ

## COILS FOR INDUSTRIAL APPLICATIONS

Item No.	m/ct	Item No.	m/ct	Item No.	m/ct
06 - 06EUR 1 C	200	09 - 06EUR 1 C	100	13 - 06EUR 1 C	100
06 - 08EUR 1 C	200	09 - 08EUR 1 C	100	13 - 08EUR 1 C	100
06 - 10EUR 1 C	150	09 - 10EUR 1 C	100	13 - 10EUR 1 C	80
06 - 12EUR 1 C	150	09 - 12EUR 1 C	100	13 - 12EUR 1 C	60
06 - 14EUR 1 C	100	09 - 14EUR 1 C	80	13 - 14EUR 1 C	60
06 - 15EUR 1 C	100	09 - 15EUR 1 C	60	13 - 15EUR 1 C	50
06 - 18EUR 1 C	80	09 - 18EUR 1 C	50	13 - 18EUR 1 C	35
06 - 20EUR 1 C	50	09 - 20EUR 1 C	40	13 - 20EUR 1 C	30
06 - 22EUR 1 C	50	09 - 22EUR 1 C	40	13 - 22EUR 1 C	30
06 - 25EUR 1 C	50	09 - 25EUR 1 C	40	13 - 25EUR 1 C	30
06 - 28EUR 1 C	50	09 - 28EUR 1 C	40	13 - 28EUR 1 C	30
		09 - 35EUR 1 C	30		

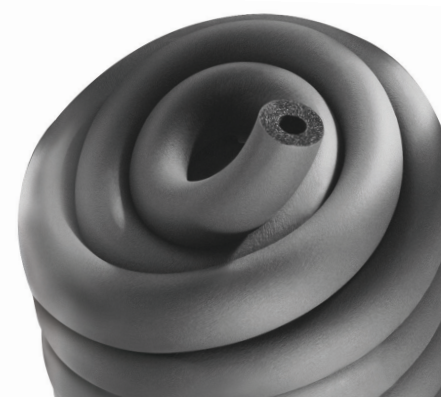
Product not in stock, available on request.

**Packaging dimensions:**  
(volume = 0,17 m<sup>3</sup>)



**Pallet dimensions:**

120 x 210 x 242 cm  
Volume = 6,1 m<sup>3</sup>  
Box/pallet = 30



# EUROBATEX®

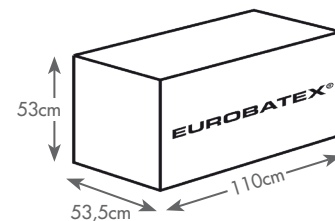
## CONTINUOUS ROLLS 1000 mm WIDTH

### SELF-ADHESIVE

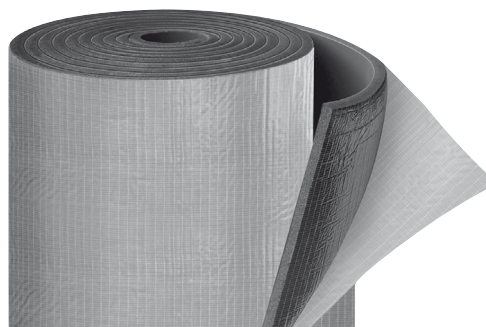
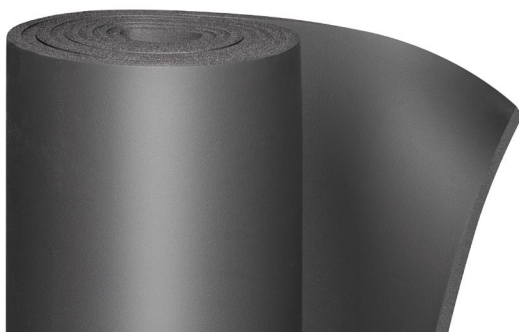
Item No.	Thickness mm	m <sup>2</sup> /box
06EUR R	6	30
10EUR R	10	20
13EUR R	13	14
16EUR R	16	12
19EUR R	19	10
25EUR R	25	8
32EUR R	32	6
40EUR R	40	4
50EUR R	50	4
60EUR R*	60	3

Item No.	Thickness mm	m <sup>2</sup> /box
06EUR R ADR	6	30
10EUR R ADR	10	20
13EUR R ADR	13	14
16EUR R ADR	16	12
19EUR R ADR	19	10
25EUR R ADR	25	8
32EUR R ADR	32	6
40EUR R ADR	40	4
50EUR R ADR	50	4
60EUR R ADR*	60	3

**Packaging dimensions:**  
(volume = 0,30 m<sup>3</sup>)



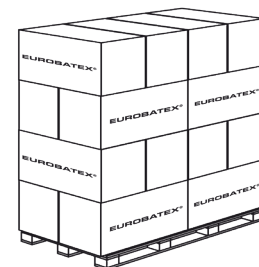
\* Made to order  
1 x 2 m or 0,5 x 2 m plate versions available on request.



**Pallet dimensions:**

120 x 210 x 277 cm  
Volume = 7 m<sup>3</sup>  
Box/pallet = 20

120 x 210 x 224 cm  
Volume = 5,64 m<sup>3</sup>  
Box/pallet = 16



## EUROBATEX® - SELF-ADHESIVE TAPE

Item No.	Description	pcs/ct
FPX 10 TR	thickness 3 mm x 50 mm width - 10 m length	24
FPX 15 TR	thickness 3 mm x 50 mm width - 15 m length	12



## CNX S ADHESIVE

Item No.	Description	pcs/ct
CNX 850 S	850 g - 1000 ml tin	12
CNX 425 S	425 g - 500 ml tin	24
CNX 200 S	200 g - 225 ml tin including brush	24





## THERMAL INSULATION PRODUCTS FOR BUILDING EQUIPMENT AND INDUSTRIAL INSTALLATIONS. FACTORY MADE FLEXIBLE ELASTOMERIC FOAM (FEF) PRODUCTS

### Dimensional tolerances specified by the European product Standard EN 14304

Form of delivery	Length	Width	Thickness		Squareness	Inside diameter	
			Declared	Tolerance		$D_i \leq 100$	$D_i > 100$
Tubes	$\pm 1,5\%$	-	$d_o \leq 8$	$\pm 1$	3,0 mm	$D_{iD} + 1 \leq D_i \leq D_{iD} + 4$	$D_{iD} + 1 \leq D_i \leq D_{iD} + 6$
			$8 < d_o \leq 18$	$\pm 1,5$			
			$18 < d_o \leq 31$	$\pm 2,5$			
			$d_o > 31$	$\pm 3$			
Sheets	$\pm 1,5\%$	$\pm 2\%$	$d_o \leq 6$	$\pm 1$	3,0 mm/m (length/width) 3,0 mm (thickness)	-	-
			$6 < d_o \leq 19$	$\pm 1,5$			
			$d_o > 19$	$\pm 2$			
Rolls	+ 5% - 1.5%	$\pm 2\%$	$d_o \leq 6$	$\pm 1$	3,0 mm/m (length/width) 3,0 mm (thickness)	-	-
			$6 < d_o \leq 19$	$\pm 1,5$			
			$d_o > 19$	$\pm 2$			
Tapes	+ 5% - 1.5%	$\pm 2\%$	$d_o = 3$	- 0.1 + 1,5	-	-	-



Union Foam S.p.A.  
 via dell'Industria 8  
 20882 Bellusco (MB) Italy  
 tel. +39.039.62089.1  
 sales@unionfoam.it  
 www.unionfoam.it